

(19)

## DETAILED ESTIMATE

( AS PER PWD SSR 2021-22)

FOR

RAMBHAU AGRO FARMERS PRODUCER COMPANY LTD.

TOTAL AMOUNT (Rs.) = 208.51 LAKHS

\* NAME OF WORK \*

CONSTRUCTION OF 1/2000 MT CAP. WH BLDG WITH ANCILLARY WORKS IN GAT NO.- 259, AT WATHAWADA, TQ. KALLAM , DIST.OSMANABAD.

*S. S. Pangave*  
**S. S. Pangave**

(B.E. Civil)

Consulting Civil Engineer

T. P. Latur / 643 / 2019

Mob. 8552085000

CONSULTANT

**RAMBHAU AGRO FARMERS PRODUCER COMPANY LTD.**

NAME OF WORK :- CONSTRUCTION OF 1/2000 MT CAP. WH BLDG WITH ANCILLARY WORKS IN GAT NO.- 259, AT WATHAWADA, TQ. KALLAM , DIST.OSMANABAD.

CAPACITY OF GODOWN :- 2000 MT

**RECAPULATION SHEET**

Sr.	Particulars	AREA	UNIT	AMOUNT(Rs.)	Rate per MT ( Rs.)	Rate per unit (Rs.)
S.W. I	W.H. Building 1/2000 MT	910.30	SQ.MTR	10950580.00	5475.29	12029.68
	Above Plinth (PEB WH Structure)	910.30	SQ.MTR	5004823.11	2477.64	5498.01
S.W. II	Internal Roads & CD Works			1936718.56		
S.W. III	Eletrification			190802.85		
S.W. IV	Royalty Charges			428473.07		
S.W. V	Material lab testing charges			23205.00		
	Total			18534602.59	9267.30	20361.05
	Add 12% GST			2224152.311		
	Add 0.50 % Labour Insurance			92673.01		
	<b>Grand Total</b>			<b>20851427.91</b>	10425.714	22906.18

*Pangave*

**S. S. Pangave**  
(B.E. Civil)  
Consulting Civil Engineer  
T. P. Latur / 643 / 2019  
Mob. 8552085000

**NAME OF WORK :- CONSTRUCTION OF 1/2000 MT CAP. WH BLDG WITH ANCILLARY WORKS IN GAT NO.- 259, AT WATHAWADA, TQ. KALLAM , DIST.OSMANABAD.**

**MEASUREMENT SHEET**

SR. NO.	DESCRIPTION OF ITEM	NO.	L	B	D	QTY.
<b>SW : 01 (PART A : CIVIL WORK)</b>						
1	Excavation for foundation in earth, soil of all types, sand, gravel and soft murum, including removing the excavated material up to a distance of 50 m, beyond the building area ( S.S.R. OF 2021-22 I.No. 21.02 P.No. 115)					
	FOR COLUMN FOOTING	22	1.80	1.50	1.500	89.100
	FOR STEPS	6	5.00	2.00	1.500	90.000
	FOR PLATFORM	12	1.50	1.50	1.500	40.500
	TOTAL QUANTITY					219.600
						Cu.M.
2	Excavation for foundation in hard murum including removing the excavated material upto distance of 50 metres beyond the building area and stacking and ( S.S.R. I.No. 21.06 P.No. 115 )					
	FOR COLUMN FOOTING,	22	1.80	1.50	0.600	35.640
	FOR STEPS	6	5.00	2.00	0.600	36.000
	FOR PLATFORM	12	1.50	1.50	0.600	16.200
	TOTAL QUANTITY					87.840
						Cu.M.
3	Providing and laying Cast in situ/Ready Mix cement concrete in M-10 of trap/ granite/ quartzite/ gneiss metal for foundation and bedding including bailing out water, (S. e-S.S.R. I.No. 24.01 P.No. 131					
	FOR COLUMN FOOTING,	22	1.80	1.50	0.150	8.910
	FOR STEPS,	6	1.20	1.20	0.150	1.296
	FOR PLATFORM	12	6.47	1.20	0.100	9.317
	FOR GODOWN,	1	47.40	18.56	0.150	131.962
TOTAL QUANTITY					151.485	
						Cu.M.
4	Providing and laying in situ/Ready Mix cement concrete M-20 of trap/ granite/quartzite/gneiss metal for R.C.C.work in foundations like raft,strip foundations, grillage and footings of R.C.C.columns and steel stanchions etc.including bailing ( S- S.S.R. I.No. 25.11, P.No. 133)					
	FOR COLUMN FOOTING,	22	1.80	1.50	0.600	35.640
	FOR PLATFORM	12	1.50	1.50	0.600	16.200
	TOTAL QUANTITY					51.840
						Cu.M.
5	Providing and laying Cast in situ /Ready Mix cement concrete M20 of trap /granite/quartzite/gneiss metal for R.C.C.columns as per detailed designs and drawing or as ( S- S.S.R. I.No. 25.31, P.No. 134)					
	FOR COLUMN FOOTING TO PLINTH	22	0.50	0.38	3.100	12.958
	FOR PLATFORM	12	0.23	0.30	3.100	2.567
	FOR COLUMN ABOVE PLINTH	22	0.23	0.38	4.850	9.326
TOTAL QUANTITY					24.851	
						Cu.M.
6	Providing and laying Cast in situ /Ready Mix cement concrete M20 of trap/granite/quartzite/gneiss metal for R.C.C. beams and lintels as per detailed designs and ( S- S.S.R. I.No. 25.50, P.No. 135)					
	<b>GROUND LEVEL</b>					
	LONG WALL	16	5.59	0.23	0.500	10.286

**MEASUREMENT SHEET**

SR. NO.	DESCRIPTION OF ITEM	NO.	L	B	D	QTY.
	SHORT WALL	6	5.83	0.23	0.500	4.023
	<b>PLINTH LEVEL</b>					
	LONG WALL	16	5.59	0.23	0.500	10.286
	SHORT WALL	6	5.83	0.23	0.500	4.023
	<b>ADD FOR LINTEL LEVEL</b>					
	LONG WALL	16	5.59	0.23	0.150	3.086
	SHORT WALL	6	5.83	0.23	0.150	1.207
	<b>ADD TOP BRACING LEVEL</b>					
	LONG WALL	16	5.59	0.23	0.450	9.257
	SHORT WALL	6	5.83	0.23	0.450	3.620
	<b>TOTAL QUANTITY</b>					45.788
						Cu.M.
7	Providing and laying Cast in situ/Ready Mix cement concrete M-20 of trap/ granite/ quartzite/ gneiss metal for R.C.C. PARDI as per detailed design and drawings including ( S.S.R. I.No. 26.17, P.No. 137 )					
	STEPS SIDE	6	0.15	0.15	2.400	0.324
	<b>TOTAL QUANTITY</b>					0.324
						Cu.M.
8	Providing and laying Cast in situ /Ready Mix cement concrete M20 of trap/granite/ quartzite/gneiss metal for R.C.C. slab sand landings as per detailed designs and ( S.S.R. I.No. 25.70, P.No. 135 )					
	GROUND FLOOR					
	RAMP	6	6.350	1.200	0.15	6.858
	<b>TOTAL QUANTITY</b>					6.858
						Cu.M.
9	Providing and laying Cast in situ /Ready Mix cement concrete M-20 of trap/granite/quartzite/gneiss metal for R.C.C. Chajja as per detailed designs and drawings (S.S.R.I.No. 26.05, P.No. 137 )					
	VENTILATOR CHAJJA,	1	1.20	0.60	0.150	0.130
	<b>TOTAL QUANTITY</b>					0.130
						Cu.M.
10	Providing and fixing in position TMT-FE-500 bar reinforcement of various diameters for R.C.C .pile caps, footings, foundations, slabs,beams, columns ,canopies, ( S.S.R. I.No.26.33, P.No. 139 )					
	Footing	51.84	cum. @	130.00	kg/cum	6739.200
	Column	24.85	cum. @	130.00	kg/cum	3230.630
	Beam	45.79	cum. @	130.00	kg/cum	5952.440
	Pardi & Chajja	0.45	cum. @	120.00	kg/cum	54.480
	Slab	6.86	cum. @	120.00	kg/cum	822.960
	<b>TOTAL</b>					16799.71
						KG
	<b>TOTAL QUANTITY</b>					16.800
						M.T.
11	Providing soling using 80mm. size trap metal in 15cm. layer including filling voids with crused sand/grit, ramming, watering etc. complete. Spec. no. As directed by Engineer in charge ( S.S.R. I.No.21.40 P.No. 118 )					
	BELOW COLUMN FOOTING	22	1.80	1.50	0.30	17.820
	BELOW FLOORING	1	47.40	18.56	0.300	263.923
	<b>TOTAL QUANTITY</b>					281.743
						CUM

**MEASUREMENT SHEET**

SR. NO.	DESCRIPTION OF ITEM	NO.	L	B	D	QTY.
12	Filling in plinth and floors with contractors material/ brought from out side and approved by Engineer incharge in layers of 15 cm to 20 cm including watering and compaction etc. (S.S.R.I.No. 21.37, P.No. 117 )					
	BELOW FLOORING	1	47.86	18.56	0.900	799.453
	TOTAL QUANTITY					799.453
						Cu.M.
13	Providing masonry with conventional / Indian Standard type bricks in cement mortar 1:6 in foundation and plinth of inner walls / in plinth of external walls including bailing out (S.S.R.I.No. 27.01, P.No.144					
	LONG WALL	16	5.59	0.23	1.200	24.685
	SHORT WALL	6	5.83	0.23	1.200	9.654
	TOTAL QUANTITY					34.340
						Cu.M.
14	Providing masonry with conventional / Indian Standard type bricks in cement mortar 1:6 in superstructure including striking joints, raking out joints, watering and scaffolding (S.S.R.I.No. 27.05, P.No. 144 )					
	LONG WALL	16	5.59	0.23	4.850	99.770
	SHORT WALL	6	5.83	0.23	4.850	39.020
	DEDUCTIONS FOR VENTILATORS	-70	1.20	0.23	0.600	-11.592
	DEDUCTIONS FOR SHUTTER	-6	2.80	0.23	3.150	-12.172
	TOTAL QUANTITY					115.026
						Cu.M.
15	Providing internal cement plaster 6 mm thick in a single coat in cement mortar 1:4 without neeru finish to concrete surface in all positions including scaffolding and curing etc. (S.S.R.I.No. 32.01, P.No. 153 )					
	FOR CHAJJAS	70	1.50	0.60		63.000
	TOTAL QUANTITY					63.000
						Sq.M.
16	Providing internal cement plaster 20 mm thick in single coat in cement mortar 1:5 without neeru finish to concrete or brick surfaces, in all positions including scaffolding and ( S.S.R. I. No. 32.03 P. No. 153 )					
	LONG WALL	2	47.40		4.850	459.780
	SHIRT WALL	2	18.56		4.850	180.032
	DEDUCTIONS FOR VENTILATOR	-70	1.20		0.600	-50.400
	DEDUCTIONS FOR SHUTTER	-6	2.80		3.150	-52.920
	TOTAL QUANTITY					536.492
						Sq.M.
17	Providing sand faced plaster externally in cement mortar using approved screened sand, in all positions including base coat of 15 mm thick in cement mortar 1:4 using (S.S.R. I. No. 32.11 P. 153 )					
	LONG WALL	2	47.86		5.850	559.962
	SHIRT WALL	2	19.02		5.850	222.534
	DEDUCTIONS FOR VENTILATORS	-70	1.20		0.600	-50.400
	DEDUCTIONS FOR SHUTTER	-6	2.80		3.150	-52.920
	TOTAL QUANTITY					679.176
						Cu.M.
18	Providing and laying in situ cement concrete M20 with tremix treatment for 100 mm thickness for flooring with groove cutting of 4mm wide and 20mm deep with (S.S.R. I. No. 33.30 P. 158 )					
	FOR GODOWN,	1	47.86	19.02		910.297

**MEASUREMENT SHEET**

SR. NO.	DESCRIPTION OF ITEM	NO.	L	B	D	QTY.	
		TOTAL QUANTITY					910.297
							SQM
19	Providing and applying white-wash in two coats on old/new plastered or masonry surfaces and asbestos cement sheets including scaffolding and preparing the surface by brushing (S.S.R. I. No. 32.34 P. 155 )						
	GROUND FLOOR					QTY AS PER 6 MM & 20 MM PLASTER	599.492
		TOTAL QUANTITY					599.492
							Sq.M.
20	Providing & applying washable oil-bound distemper of approved colour and shade to old & new surfaces in two coat including scaffolding, preparing the surfaces. (S.S.R.I.No. 36.11, P. No. 167)						
						QTY AS PER 6 MM & 20 MM PLASTER	599.492
		TOTAL QUANTITY					599.492
							SQ.M.
21	Providing and applying two coats of exterior weather shield paint of approved manufacture and of approved colour to the plastered surfaces including cleaning ,preparing the (S.S.R.I.No. 35.26, P. No. 165)						
						QTY AS PER 6 MM & 12 MM PLASTER	679.176
		TOTAL QUANTITY					679.176
							Sq.M.
22	Providing & constructing Brick Masonry Inspection Chamber 60cm x 45cm x 90cm including 1:4:8 cement concrete foundation 1:2:4 cement concrete channels half ( S.S.R. I.No. 42.10, P.No. 200 )						
		6					6.000
		TOTAL QUANTITY					6.000
							NOS.
23	Providing and laying machine cut machine polished machine cut Kota stone slabs 20 to 25 mm thick for treads and risers of steps and staircases, with rounded nosing for (S.S.R. I.No.33.18 P. No. 157)						
	UPFLOW STAIRS	24	1.20	0.30			8.640
		24	1.20		0.150		4.320
		TOTAL QUANTITY					12.960
							Sq.M.
24	Providing and fixing in position powder coated aluminium louvered windows / ventilator of various sizes with powder coating as per detailed drawing and specifications including (S.S.R. I.No.39.68 P. No. 188)						
	VENTILATOR	70	1.20		0.600		50.400
		TOTAL QUANTITY					50.400
							Sq.M.
25	Providing and fixing corrugated galvanised iron sheets of 0.63mm thick (24 B.W.G.) for roofing without wind tiles including fastening with galvanised iron screws and (S.S.R. I.No. 38.05 P. No. 171)						
	FOR LONG SIDE	2	47.86		3.15		301.52
	FOR SHORT SIDE	2	19.02		3.15		119.83
	ABOVE SHUTTER	6	6.35	1.20			45.72
		TOTAL QUANTITY					467.064
							Sq.M.
26	Providing and fabricating structural steel work in rolled sections like joists, channels, angles, tees etc. as per detailed design and drawings or as directed including cutting, fabricating, hoisting, erecting, fixing in position						

**MEASUREMENT SHEET**

SR. NO.	DESCRIPTION OF ITEM	NO.	L	B	D	QTY.
	(S.S.R. I.No. 23.02 P. No. 129)					
	FOR TRUSS, ANGLE, GIRDER	467.06	Sq.M.	28.00	KG/SQM	13077.79
						KG
		TOTAL QUANTITY				13.08
						MT
27	Providing and fixing rolling shutter fabricated from steel laths of minimum thickness 0.9mm with lock plate of 3.15mm thickness reinforced with 35x35x5 mm angle (S.S.R. I.No. 39.25 P. No. 164)					
	OPENING	6	2.80	3.15		52.920
		TOTAL QUANTITY				52.920
						Sq.M.
28	Providing and fixing self supporting steel roofing system for a Godown or a like made up of structural grade steel sheet of 912 millimeter width(tolerance+/-2millimeter),moulded (S.S.R. I.No. 38.44 P. No. 231)					
	TURBO VENTILATOR	16				16.000
		TOTAL QUANTITY				NOS
29	Providing and fixing 45 cm wide mild steel ladder of 40mmx6mm mild steel flat stringers and steps of 18 mm dia. Mild steel bar for water tank including fixing (S.S.R. I.No. 41.56 P. No. 198)					
	LADDER	6	8.00			48.000
		TOTAL QUANTITY				rmt
30	Conveying materials obtained from excavation including all lifts,laying in layers of 20cm. to 30cm.breaking clods,dressing to the required lines,curves,grades and section,watering and compacting to not less than 95% (S.S.R. I.No. 2.26 P. No. 24)					
	AS PER ITEM NO 1 & 2	307.44				307.440
		TOTAL QUANTITY				CUM
31	Providing preconstructional antitermite treatment as per I.S.6313(Part-II) by treating the top surface of plinth filling at the rate of 5 litres of emulsion concentrate at 1.0 (S.S.R. I.No. 21.24 P. No. 117)					
	FOR GODOWN,	1	47.86	19.02		910.297
		TOTAL QUANTITY				SQM
32	ADA compliant modular Multilingual and tactile Emergency evacuation map of each floor indicating the current position of the viewer saving "YOU ARE HERE" of 15 mm height					
	Fire extinguishers	7				7.000
		TOTAL QUANTITY				NOS
31	<b>Laboratory test of construction material</b>					
	<b>1) BASIC TEST OF AGGREGATE</b>					0.000
	a) Water Absorption, Specific Gravity,Impact Value, Crushing Value.	1.00				1.000
	b) Sieve Analysis.	1.00				1.000
	c) Abrasion Value.	1.00				1.000
	d) Flakiness Index & Elongation Index.	1.00				1.000
	<b>2) BRICKS</b>					
	Water Absorption (Set of 5 Bricks), Compressive Strength( Set of 5 Bricks), Efflorescence (Set of 5 Bricks).	1.000				1.000
	<b>3) CONCRETE</b>					
	a) Compressive Strength OF C.C. Cube (Set of 3 cubes).	1.000				1.000
	b) Concrete Mix Design (With all Tests on basic materials)	1.000				1.000

MEASUREMENT SHEET						
SR. NO.	DESCRIPTION OF ITEM	NO.	L	B	D	QTY.
	<b>4) STEEL</b>					
	Steel bar testing upto 16 mm (set of 3 bars)(Tensile strength, %, Elongation, Yield Stress,Weight-Per Meter, Bend / Rebend Test, Proof Stress.)	1.000				1.000
<b>PART B: PEB WORK</b>						
1	Above Plinth PEB Structure - providing & erecting PEB structure with zincallume sheets etc.complete.					
	FOR WAREHOUSE	1	47.86	19.02		910.297
		TOTAL QUANTITY				910.297
						SQM

**NAME OF WORK :- CONSTRUCTION OF 1/2000 MT CAP. WH BLDG WITH ANCILLARY WORKS  
IN GAT NO.- 259, AT WATHAWADA, TQ. KALLAM , DIST.OSMANABAD.**

**ABSTRACT SHEET**

SR. NO.	DESCRIPTION OF ITEM	QUANTITY	RATE	UNIT	TOTAL AMOUNT
1	Excavation for foundation in earth, soil of all types, sand, gravel and soft murum, including removing the excavated material up to a distance of 50 m. beyond the building area & <u>stacking and spreading as directed, dewatering, preparing the</u> ( S.S.R. OF 2021-22 I.No. 21.02 P.No. 115)				
	RATE ANALYSIS	219.600	193.00	Cu.M.	42383.00
2	Excavation for foundation in hard murum including removing the excavated material upto distance of 50 metres beyond the building area and stacking and spreading as directed, dewatering, preparing the bed for the foundation and <u>back filling, removing water including dewatering</u> ( S.S.R. I.No. 21.06 P.No. 115 )				
	RATE ANALYSIS	87.840	212.00	Cu.M.	18622.00
3	Providing and laying Cast in situ/Ready Mix cement concrete in M-10 of trap/ granite/ quartzite/ gneiss metal for <u>foundation and bedding including bailing out water, formwork</u> (S. e-S.S.R. I.No. 24.01 P.No. 131)				
	RATE ANALYSIS	151.485	7264.35	Cu.M.	1100440.00
4	Providing and laying in situ/Ready Mix cement concrete M-20 of trap/ granite/quartzite/gneiss metal for R.C.C.work in foundations like raft,strip foundations, grillage and footings of <u>R.C.C.columns and steel stanchions etc.including bailing out</u> ( S- S.S.R. I.No. 25.11, P.No. 133)				
	RATE ANALYSIS	51.840	8040.65	Cu.M.	416827.00
5	Providing and laying Cast in situ /Ready Mix cement concrete M20 of trap /granite/quartzite/gneiss metal for R.C.C.columns <u>as per detailed designs and drawing or as directed including</u> ( S- S.S.R. I.No. 25.31, P.No. 134)				
	RATE ANALYSIS	24.851	14415.71	Cu.M.	358245.00
6	Providing and laying Cast in situ /Ready Mix cement concrete M20 of trap/granite/quartzite/gneiss metal for R.C.C. beams and lintels as per detailed designs and drawings or as directed ( S- S.S.R. I.No. 25.50, P.No. 135)				
	RATE ANALYSIS	45.788	13336.10	Cu.M.	610633.00
7	Providing and laying Cast in situ/Ready Mix cement concrete M-20 of trap/ granite/ quartzite/ gneiss metal for R.C.C. <u>PARDI as per detailed design and drawings including</u> ( S.S.R. I.No. 26.17, P.No. 137)				
	RATE ANALYSIS	0.324	16545.10	Cu.M.	5361.00
8	Providing and laying Cast in situ /Ready Mix cement concrete M20 of trap/granite/ quartzite/gneiss metal for R.C.C. slab sand landings as per detailed designs and drawings including centering,formwork, cover blocks, laying/pumping, ( S.S.R. I.No. 25.70, P.No. 135)				
	RATE ANALYSIS	6.858	15796.10	Cu.M.	108330.00
9	Providing and laying Cast in situ /Ready Mix cement concrete M-20 of trap/granite/quartzite/gneiss metal for R.C.C. Chajja as per detailed designs and drawings including <u>centering formwork cover blocks, compacting</u> (S.S.R.I.No. 26.05, P.No. 137 )				
	RATE ANALYSIS	0.130	14964.10	Cu.M.	1945.00
10	Providing and fixing in position TMT-FE-500 bar reinforcement of various diameters for R.C.C .pile caps, footings, foundations, slabs,beams, columns ,canopies, staircase, <u>newels,chaijas, lintels, pardis, copings, fins,arches etc. as per</u>				

**ABSTRACT SHEET**

SR. NO.	DESCRIPTION OF ITEM	QUANTITY	RATE	UNIT	TOTAL AMOUNT
	( S.S.R. I.No.26.33, P.No. 139)				
	RATE ANALYSIS	16.800	72276.01	Cu.M.	1214237.0
11	Providing soling using 80mm. size trap metal in 15cm. layer including filling voids with crushed sand/grit, ramming, watering etc. complete. Spec. no. As directed by Engineer in ( S.S.R. I.No.21.40 P.No. 118 )				
	RATE ANALYSIS	281.743	1982.06	CUM	558432.00
12	Filling in plinth and floors with contractors material/ brought from out side and approved by Engineer incharge in layers of 15 cm to 20 cm including watering and compaction etc. Complete (Spec.No.Bd.A.11 page No.263) (S.S.R.I.No. 21.37, P.No. 117 )				
	RATE ANALYSIS	799.453	1098.51	Cu.M.	878207.00
13	Providing masonry with conventional / Indian Standard type bricks in cement mortar 1:6 in foundation and plinth of inner walls / in plinth of external walls including bailing out water (S.S.R.I.No. 27.01, P.No.144				
	RATE ANALYSIS	34.340	9399.87	Cu.M.	322792.00
14	Providing masonry with conventional / Indian Standard type bricks in cement mortar 1:6 in superstructure including striking joints, raking out joints, watering and scaffolding complete. (Spec.No.Bd.G.5 page No.315) (S.S.R.I.No. 27.05, P.No. 144 )				
	RATE ANALYSIS	115.026	9626.87	Cu.M.	1107340.00
15	Providing internal cement plaster 6 mm thick in a single coat in cement mortar 1:4 without neeru finish to concrete surface in all positions including scaffolding and curing etc. complete. Spe. No. :Bd. 1 Page As Directed By Engineer Incharge (S.S.R.I.No. 32.01, P.No. 153 )				
	RATE ANALYSIS	63.000	241.62	Sq.M.	15222.00
16	Providing internal cement plaster 20 mm thick in single coat in cement mortar 1:5 without neeru finish to concrete or brick surfaces, in all positions including scaffolding and curing etc. complete. Spe. No. :Bd. L.2 Page No. 368 ( S.S.R. I. No. 32.03 P. No. 153 )				
	RATE ANALYSIS	536.492	409.62	Sq.M.	219758.00
17	Providing sand faced plaster externally in cement mortar using approved screened sand, in all positions including base coat of 15 mm thick in cement mortar 1:4 using waterproofing (S.S.R. I. No. 32.11 P. 153 )				
	RATE ANALYSIS	679.176	649.62	Sq.M.	441206.00
18	Providing and laying in situ cement concrete M20 with tremix treatment for 100 mm thickness for flooring with groove cutting of 4mm wide and 20mm deep with necessaryrefilling with bitumen etc. complete (S.S.R. I. No. 33.30 P. 158 )				
	RATE ANALYSIS	910.297	813.30	Sq.M.	740345.00
19	Providing and applying white-wash in two coats on old/new plastered or masonry surfaces and asbestos cement sheets including scaffolding and preparing the surface by brushing and brooming down etc. complete. (S.S.R. I. No. 32.34 P. 155 )				
	RATE ANALYSIS	599.492	11.00	Sq.M.	6594.00

**ABSTRACT SHEET**

SR. NO.	DESCRIPTION OF ITEM	QUANTITY	RATE	UNIT	TOTAL AMOUNT
20	Providing & applying washable oil-bound distemper of approved colour and shade to old & new surfaces in two coat including scaffolding, preparing the surfaces. (excluding the primer coat) etc. complete Spec. No. Bd. P. 5 (S.S.R.I.No. 36.11, P. No. 167)				
	RATE ANALYSIS	599.492	43.00	Sq.M.	25778.00
21	Providing and applying two coats of exterior weather shield paint of approved manufacture and of approved colour to the plastered surfaces including cleaning ,preparing the plaster (S.S.R.I.No. 35.26, P. No. 165)				
	RATE ANALYSIS	679.176	238.00	Sq.M.	161644.00
22	Providing & constructing Brick Masonry Inspection Chamber 60cm x 45cm x 90cm including 1:4:8 cement concrete foundation 1:2:4 cement concrete channels half As directed by Engineer in charge. ( S.S.R. I.No. 42.10, P.No. 200 )				
	RATE ANALYSIS	6.000	13643.02	Sq.M.	81858.00
23	Providing and laying machine cut machine polished machine cut Kota stone slabs 20 to 25 mm thick for treads and risers of steps and staircases with rounded nosing for the (S.S.R. I.No.33.18 P. No. 157)				
	RATE ANALYSIS	12.960	1574.54	Sq.M.	20406.00
24	Providing and fixing in position powder coated aluminium louvered windows / ventilator of various sizes with powder coating as per detailed drawing and specifications including aluminium frames 80 x 38 mm x 1.22 mm box type. 5 mm (S.S.R. I.No.39.68 P. No. 188)				
	RATE ANALYSIS	50.400	3107.00	Sq.M.	156593.00
25	Providing and fixing corrugated galvanized iron sheets of 0.63mm thick (24 B.W.G.) for roofing without wind tiles including fastening with galvanised iron screws and bolts,lead and bitumen washers as per drawing etc.complete.(Weight of 5.5 kg/sq.m.) (S.S.R. I.No. 38.05 P. No. 171)				
	RATE ANALYSIS	467.064	1042.00	Sq.M.	486681.00
26	Providing and fabricating structural steel work in rolled sections like joists, channels, angles, tees etc. as per detailed design and drawings or as directed including cutting, fabricating, hoisting, erecting, fixing in position making riveted (S.S.R. I.No. 23.02 P. No. 129)				
	RATE ANALYSIS	13.078	85585.00	MT	1119263.00
27	Providing and fixing rolling shutter fabricated from steel laths of minimum thickness 0.9mm with lock plate of 3.15mm thickness reinforced with 35x35x5 mm angle section fitted (S.S.R. I.No. 39.25 P. No. 164)				
	RATE ANALYSIS	52.920	4730.00	Sq.M.	250312.00
28	Providing and fixing self supporting steel roofing system for a Godown or a like made up of structural grade steel sheet of 912 millimeter width(tolerance+/-2millimeter),moulded at site using mechanical press dies to the desired curve and shape to (S.S.R. I.No. 38.44 P. No. 231)				
	RATE ANALYSIS	16.000	8680.00	Nos.	138880.00
29	Providing and fixing 45 cm wide mild steel ladder of 40mmx6mm mild steel flat stringers and steps of 18 mm dia. Mild steel bar for water tank including fixing itin(1:2:4)M-15 (S.S.R. I.No. 41.56 P. No. 198)				
	RATE ANALYSIS	7.000	1151.00	RMT	8057.00

<b>ABSTRACT SHEET</b>					
SR. NO.	DESCRIPTION OF ITEM	QUANTITY	RATE	UNIT	TOTAL AMOUNT
30	Conveying materials obtained from excavation including all lifts, laying in layers of 20cm. to 30cm. breaking clods, dressing to the required lines, curves, grades and section, watering and compacting to not less than 97% of standard proctor density for a lead of 300m. to 500m. inclusive from the site of (S.S.R. I.No. 2.26 P. No. 24)				
	RATE ANALYSIS	307.440	359.00	cum	110371.00
31	Providing preconstructional antitermite treatment as per I.S.6313(Part-II) by treating the top surface of plinth filling at the rate of 5 litres of emulsion concentrate at 1.0 percent of chlorophyrifos per square metre of surface area covering ten (S.S.R. I.No. 21.24 P. No. 117)				
	RATE ANALYSIS	910.297	94.00	sqm	85568.00
32	ADA compliant modular Multilingual and tactile Emergency evacuation map of each floor indicating the current position of the viewer saying "YOU ARE HERE" of 15 mm height letter in red with white bac Kilogram round, indicating the emergency exits, locations of fire extinguishers etc. Signs shall have a (S.S.R. I.No. 51.74 P. No. 261)				
	RATE ANALYSIS	7.000	19750.00	Nos.	138250.00
			<b>TOTAL Rs.</b>		<b>10950580</b>
31	<b>Laboratory test of construction material</b>				
	<b>1) BASIC TEST OF AGGREGATE</b>				
	a) Water Absorption, Specific Gravity, Impact Value, Crushing Value.	1.00	2600.00	Nos.	2600.00
	b) Sieve Analysis.	1.00	690.00	Nos.	690.00
	c) Abrasion Value.	1.00	1170.00	Nos.	1170.00
	d) Flakiness Index & Elongation Index.	1.00	850.00	Nos.	850.00
	<b>2) BRICKS</b>				
	Water Absorption (Set of 5 Bricks), Compressive Strength (Set of 5 Bricks), Efflorescence (Set of 5 Bricks).	1.000	2175.00	Nos.	2175.00
	<b>3) CONCRETE</b>				
	a) Compressive Strength OF C.C. Cube (Set of 3 cubes).	1.000	690.00	Nos.	690.00
	b) Concrete Mix Design (With all Tests cr basic materials)	1.000	13755.00	Nos.	13755.00
	<b>4) STEEL</b>				
	Steel bar testing upto 16 mm (set of 3 bars)(Tensile strength, %, Elongation, Yield Stress, Weight-Per Meter, Bend / Rebend Test, Proof Stress.)	1.000	1275.00	Nos.	1275.00
			<b>TOTAL Rs.</b>		<b>23205.00</b>
<b>PART B: PEB WORK</b>					
1	Above Plinth PEB Structure - providing & erecting PEB structure with zincalume sheets etc. complete.				
	RATE ANALYSIS	910.297	5498.01	SQM	5004823.11

  
**S. S. Pangave**  
 (B.E. CIVIL)  
 Consulting Civil Engineer  
 T. P. Latur / 610 1 2019  
 Mob. #552085000

**NAME OF WORK :- CONSTRUCTION OF 1/2000 MT CAP. WH BLDG WITH ANCILLARY WORKS IN GAT NO.- 259, AT WATHAWADA, TQ. KALLAM , DIST.OSMANABAD.**

**RATE ANALYSIS AS PER SSR 2021-22**

SR. NO.	DESCRIPTION OF ITEM	QTY.	NET LEAD CHARGES	RATE
1	Excavation for foundation in earth, soil of all types, sand, gravel and soft murum, including removing the excavated material up to a distance of 50 m. beyond the building area & stacking and spreading as directed, dewatering, preparing the bed for the foundation and ( S.S.R. OF 2021-22 I.No. 21.02 P.No. 115 )			193.00
	TOTAL RATE Rs.			193.00 PerCu.M.
2	Excavation for foundation in hard murum including removing the excavated material upto distance of 50 metres beyond the building area and stacking and spreading as directed, dewatering, preparing the bed for the foundation and necessary back filling, ramming, watering including shoring and strutting etc. complete. ( S.S.R. I.No. 21.06 P.No. 115 )			212.00
	TOTAL RATE Rs.			212.00 PerCu.M.
3	Providing and laying Cast in situ/Ready Mix cement concrete in M-10 of trap/ granite/ quartzite/ gneiss metal for foundation and bedding including bailing out water, formwork laying/pumping compacting. (S. e-S.S.R. I.No. 24.01 P.No. 131			5538.00
	ADD LEAD CHARGES FOR CEMENT	0.22000	498.01	109.56
	ADD LEAD CHARGES FOR SAND	0.47000	1456.98	684.78
	ADD LEAD CHARGES FOR CR METAL	0.24000	660.06	158.41
	ADD LEAD CHARGES FOR 40MM METAL CB	0.70000	632.56	442.79
	@ADD DIFF.COST FOR SAND	0.47000	825.00	387.75
	@ADD DIFF.COST FOR 20MM METAL	0.24000	174.00	41.76
	@ADD DIFF.COST FOR 40MM METAL CB	-0.70000	141.00	-98.70
	TOTAL RATE Rs.			7264.35 PerCu.M.
4	Providing and laying in situ/Ready Mix cement concrete M-20 of trap/ granite/quartzite/gneiss metal for R.C.C.work in foundations like raft,strip foundations, grillage and footings of R.C.C.columns and steel ( S- S.S.R. I.No. 25.11, P.No. 133)			6666.00
	ADD LEAD CHARGES FOR CEMENT	0.35000	498.01	174.30
	ADD LEAD CHARGES FOR SAND	0.44000	1456.98	641.07
	ADD LEAD CHARGES FOR CR METAL	0.33000	660.06	217.82
	@ADD DIFF.COST FOR SAND	0.44000	825.00	363.00
	@ADD DIFF.COST FOR 20MM METAL	0.22000	174.00	38.28
	@ADD DIFF.COST FOR 12MM METAL	0.11000	174.00	19.14
	@ADD DIFF.COST FOR 40MM METAL CB	-0.56000	141.00	-78.96
	TOTAL RATE Rs.			8040.65 PerCu.M.
5	Providing and laying Cast in situ /Ready Mix cement concrete M20 of trap /granite/quartzite/gneiss metal for R.C.C.columns as per detailed designs and drawing or as directed including centering,formwork,cover blocks ( S- S.S.R. I.No. 25.31, P.No. 134)			12987.00
	ADD LEAD CHARGES FOR CEMENT	0.30000	498.01	149.40
	ADD LEAD CHARGES FOR SAND	0.44000	1456.98	641.07

**RATE ANALYSIS AS PER SSR 2021-22**

SR. NO.	DESCRIPTION OF ITEM	QTY.	NET LEAD CHARGES	RATE
	ADD LEAD CHARGES FOR CR METAL	0.33000	660.06	217.82
	@ADD DIFF.COST FOR SAND	0.44000	825.00	363.00
	@ADD DIFF.COST FOR 20MM METAL	0.22000	174.00	38.28
	@ADD DIFF.COST FOR 12MM METAL	0.11000	174.00	19.14
	TOTAL RATE Rs.			14415.71 PerCu.M.
6	Providing and laying Cast in situ /Ready Mix cement concrete M20 of trap/granite/quartzite/gneiss metal for R.C.C. beams and lintels as per detailed designs and drawings or as directed including centering,formwork,cover blocks,laying/pumping, compacting and roughening the surface if special finish ( S- S.S.R. I.No. 25.50, P.No. 135)			11483.00
	ADD LEAD CHARGES FOR CEMENT	0.35000	498.01	174.30
	ADD LEAD CHARGES FOR SAND	0.42500	1456.98	619.22
	ADD LEAD CHARGES FOR CR METAL	0.85000	660.06	561.05
	@ADD DIFF.COST FOR SAND	0.42500	825.00	350.63
	@ADD DIFF.COST FOR 20MM METAL	0.57000	174.00	99.18
	@ADD DIFF.COST FOR 12MM METAL	0.28000	174.00	48.72
	TOTAL RATE Rs.			13336.10 PerCu.M.
7	Providing and laying Cast in situ/Ready Mix cement concrete M-20 of trap/ granite/ quartzite/ gneiss metal for R.C.C. PARDI as per detailed design and drawings including centering, formwork,cover blocks, compacting ( S.S.R. I.No. 26.17, P.No. 137)			14692.00
	ADD LEAD CHARGES FOR CEMENT	0.35000	498.01	174.30
	ADD LEAD CHARGES FOR SAND	0.42500	1456.98	619.22
	ADD LEAD CHARGES FOR CR METAL	0.85000	660.06	561.05
	@ADD DIFF.COST FOR SAND	0.42500	825.00	350.63
	@ADD DIFF.COST FOR 20MM METAL	0.57000	174.00	99.18
	@ADD DIFF.COST FOR 12MM METAL	0.28000	174.00	48.72
	TOTAL RATE Rs.			16545.10 PerCu.M.
8	Providing and laying Cast in situ /Ready Mix cement concrete M20 of trap/granite/ quartzite/gneiss metal for R.C.C. slab sand landings as per detailed designs and drawings including centering,formwork, cover blocks, ( S.S.R. I.No. 25.70, P.No. 135)			13943.00
	ADD LEAD CHARGES FOR CEMENT	0.35000	498.01	174.30
	ADD LEAD CHARGES FOR SAND	0.42500	1456.98	619.22
	ADD LEAD CHARGES FOR CR METAL	0.85000	660.06	561.05
	@ADD DIFF.COST FOR SAND	0.42500	825.00	350.63
	@ADD DIFF.COST FOR 20MM METAL	0.57000	174.00	99.18
	@ADD DIFF.COST FOR 12MM METAL	0.28000	174.00	48.72
	TOTAL RATE Rs.			15796.10 PerCu.M.
9	Providing and laying Cast in situ /Ready Mix cement concrete M-20 of trap/granite/quartzite/gneiss metal for R.C.C. Chajja as per detailed designs and drawings including centering,formwork,cover blocks, compacting, curing finishing and roughening the (S.S.R.I.No. 26.05, P.No. 137 )			13111.00
	ADD LEAD CHARGES FOR CEMENT	0.35000	498.01	174.30
	ADD LEAD CHARGES FOR SAND	0.42500	1456.98	619.22
	ADD LEAD CHARGES FOR CR METAL	0.85000	660.06	561.05

**RATE ANALYSIS AS PER SSR 2021-22**

SR. NO.	DESCRIPTION OF ITEM	QTY.	NET LEAD CHARGES	RATE	
	@ADD DIFF.COST FOR SAND	0.42500	825.00	350.63	
	@ADD DIFF.COST FOR 20MM METAL	0.57000	174.00	99.18	
	@ADD DIFF.COST FOR 12MM METAL	0.28000	174.00	48.72	
	TOTAL RATE Rs.			14964.10	PerCu.M.
10	Providing and fixing in position TMT-FE-500 bar reinforcement of various diameters for R.C.C .pile caps, footings, foundations, slabs,beams, columns ,canopies, staircase, newels,chajjas, lintels, pardis, copings, fins arches etc. as per detailed designs drawings and ( S.S.R. I.No.26.33, P.No. 139)			71778.00	
	ADD LEAD CHARGES FOR STEEL	1.00000	498.01	498.01	
	TOTAL RATE Rs.			72276.01	PerM.T.
11	Providing soling using 80mm. size trap metal in 15cm. layer including filling voids with crused sand/grit, ramming, watering etc. complete. Spec. no. As directed ( S.S.R. I.No.21.40 P.No. 118 )			1322.00	
	ADD LEAD CHARGES FOR METAL	1.00000	660.06	660.06	
	TOTAL RATE Rs.			1982.06	PerCU.M.
12	Filling in plinth and floors with contractors material/ brought from out side and approved by Engineer incharge in layers of 15 cm to 20 cm including watering (S.S.R.I.No. 21.37, P.No. 117 )			550.00	
	ADD LEAD CHARGES FOR MURUM-HARD	1.00000	511.51	511.51	
	ADD DIFF.COST FOR MURUM-HARD	1.00000	37.00	37.00	
	TOTAL RATE Rs.			1098.51	PerCu.M.
13	Providing masonry with conventional / Indian Standard type bricks in cement mortar 1:6 in foundation and plinth of inner walls / in plinth of external walls including hauling out water manually, striking joints on unexposed (S.S.R.I.No. 27.01, P.No.144			7343.00	
	ADD LEAD CHARGES FOR CEMENT	0.35000	498.01	174.30	
	ADD LEAD CHARGES FOR SAND	0.42500	1456.98	619.22	
	ADD LEAD CHARGES FOR BRICKS	0.47500	1603.90	761.85	
	@ADD DIFF.COST FOR SAND	0.32000	825.00	264.00	
	ADD DIFF.COST FOR BRICKS	475.000	0.50	237.50	
	TOTAL RATE Rs.			9399.87	PerCu.M.
14	Providing masonry with conventional / Indian Standard type bricks in cement mortar 1:6 in superstructure including striking joints, raking out joints, watering and scaffolding complete. (Spec.No.Bd.G.5 page No.315) (S.S.R.I.No. 27.05, P.No. 144 )			7570.00	
	ADD LEAD CHARGES FOR CEMENT	0.35000	498.01	174.30	
	ADD LEAD CHARGES FOR SAND	0.42500	1456.98	619.22	
	ADD LEAD CHARGES FOR BRICKS	0.47500	1603.90	761.85	
	@ADD DIFF.COST FOR SAND	0.32000	825.00	264.00	
	ADD DIFF.COST FOR BRICKS	475.000	0.50	237.50	
	TOTAL RATE Rs.			9626.87	PerCu.M.

**RATE ANALYSIS AS PER SSR 2021-22**

SR. NO.	DESCRIPTION OF ITEM	QTY.	NET LEAD CHARGES	RATE	
15	Providing internal cement plaster 6 mm thick in a single coat in cement mortar 1:4 without neeru finish to concrete surface in all positions including scaffolding (S.S.R.I.No. 32.01, P.No. 153 )			191.00	
	ADD LEAD CHARGES FOR CEMENT	0.01000	498.01	4.98	
	ADD LEAD CHARGES FOR SAND	0.02000	1456.98	29.14	
	@ADD DIFF.COST FOR SAND	0.02000	825.00	16.50	
	TOTAL RATE Rs.			241.62	PerSq.M.
	16	Providing internal cement plaster 20 mm thick in single coat in cement mortar 1:5 without neeru finish to concrete or brick surfaces, in all positions including ( S.S.R. I. No. 32.03 P. No. 153 )			359.00
ADD LEAD CHARGES FOR CEMENT		0.01000	498.01	4.98	
ADD LEAD CHARGES FOR SAND		0.02000	1456.98	29.14	
@ADD DIFF.COST FOR SAND		0.02000	825.00	16.50	
TOTAL RATE Rs.			409.62	PerSq.M.	
17		Providing sand faced plaster externally in cement mortar using approved screened sand, in all positions including base coat of 15 mm thick in cement mortar 1:4 using (S.S.R. I. No. 32.11 P. 153 )			599.00
	ADD LEAD CHARGES FOR CEMENT	0.01000	498.01	4.98	
	ADD LEAD CHARGES FOR SAND	0.02000	1456.98	29.14	
	@ADD DIFF.COST FOR SAND	0.02000	825.00	16.50	
	TOTAL RATE Rs.			649.62	PerSq.M.
	18	Providing and laying in situ cement concrete M20 with tremix treatment for 100 mm thickness for flooring with groove cutting of 4mm wide and 20mm deep with necessary filling with bitumen etc. complete (S.S.R. I. No. 33.30 P. 158 )			746.00
ADD LEAD CHARGES FOR CEMENT		0.01000	498.01	4.98	
ADD LEAD CHARGES FOR SAND		0.02000	1456.98	29.14	
ADD LEAD CHARGES FOR CR METAL		0.02000	660.06	13.20	
@ADD DIFF.COST FOR SAND		0.02000	825.00	16.50	
ADD DIFF.COST FOR CR METAL		0.02000	174.00	3.48	
TOTAL RATE Rs.			813.30	PerSq.M.	
19	Providing and applying white-wash in two coats on old/new plastered or masonry surfaces and asbestos cement sheets including scaffolding and preparing the surface by brushing and brooming down etc. complete. (S.S.R. I. No. 32.34 P. 155 )			11.00	
	TOTAL RATE Rs.			11.00	PerSq.M.
20	Providing & applying washable oil-bound distemper of approved colour and shade to old & new surfaces in two coat including scaffolding, preparing the surfaces. (S.S.R.I.No. 36.11, P. No. 167)			43.00	
	TOTAL RATE Rs.			43.00	PerSq.M.

RATE ANALYSIS AS PER SSR 2021-22					
SR. NO.	DESCRIPTION OF ITEM	QTY.	NET LEAD CHARGES	RATE	
21	Providing and applying two coats of exterior weather shield paint of approved manufacture and of approved colour to the plastered surfaces including cleaning <del>preparing the plaster surface applying primer coat</del> (S.S.R.I.No. 35.26, P. No. 165)			238.00	
	TOTAL RATE Rs.			238.00 PerSq.M.	
22	Providing & constructing Brick Masonry Inspection Chamber 60cm x 45cm x 90cm including 1:4:8 cement concrete foundation 1:2:4 cement concrete channels ( S.S.R. I.No. 42.10, P.No. 200 )			12348.00	
	ADD LEAD CHARGES FOR CEMENT	0.35000	498.01	174.30	
	ADD LEAD CHARGES FOR SAND	0.42500	1456.98	619.22	
	@ADD DIFF.COST FOR SAND	0.32000	825.00	264.00	
	ADD DIFF.COST FOR BRICKS	475.000	0.50	237.50	
	TOTAL RATE Rs.				13643.02 PerSq.M.
23	Providing and laying machine cut machine polished machine cut Kota stone slabs 20 to 25 mm thick for treads and risers of steps and staircases, with rounded nosing for the treads on a bed of 1:4 cement mortar including cement float, filling joints with neat cement slurry, curing, polishing and cleaning etc. complete. Spec. No. :Bd.M.22 Page No. 390 (S.S.R. I.No.33.18 P. No. 157)			1493.00	
	ADD LEAD CHARGES FOR CEMENT	0.01250	498.01	6.23	
	ADD LEAD CHARGES FOR SAND	0.03300	1456.98	48.08	
	@ADD DIFF.COST FOR SAND	0.03300	825.00	27.23	
	TOTAL RATE Rs.				1574.54 PerSq.M.
	24	Providing and fixing in position powder coated aluminium louvered windows / ventilator of various sizes with powder coating as per detailed drawing and (S.S.R. I.No.39.68 P. No. 188)			3107.00
TOTAL RATE Rs.			3107.00 PerSq.M.		
25	Providing and fixing corrugated galvanised iron sheets of 0.63mm thick (24 B.W.G.) for roofing without wind tiles including fastening with galvanised iron screws and bolts, lead and bitumen washers as per drawing (S.S.R. I.No. 38.05 P. No. 171)			1042.00	
	TOTAL RATE Rs.			1042.00 PerSq.M.	
26	Providing and fabricating structural steel work in rolled sections like joists, channels, angles, tees etc. as per detailed design and drawings or as directed including cutting, fabricating, hoisting, erecting, fixing in position making riveted / bolted /welded connections without (S.S.R. I.No. 23.02 P. No. 129)			85585.00	
	TOTAL RATE Rs.			85585.00 PerSq.M.	
27	Providing and fixing rolling shutter fabricated from steel laths of minimum thickness 0.9mm with lock plate of 3.15mm thickness reinforced with 35x35x5 mm angle section fitted with sliding bolts and handles for both sides, deep M.S.channel section of depth and thickness (S.S.R. I.No. 38.05 P. No. 171)			4730.00	
	TOTAL RATE Rs.			4730.00 SQM	

**RATE ANALYSIS AS PER SSR 2021-22**

SR. NO.	DESCRIPTION OF ITEM	QTY.	NET LEAD CHARGES	RATE
28	Providing and fixing self supporting steel roofing system for a Godown or a like made up of structural grade steel sheet of 912 millimeter width(tolerance+/- 2millimeter),moulded at site using mechanical press dies to the desired curve and shape to form 605 millimeter (S.S.R. I.No. 38.44 P. No. 231)			8680.00
	TOTAL RATE Rs.			8680.00 NOS
29	Providing and fixing 45 cm wide mild steel ladder of 40mmx6mm mild steel flat stringers and steps of 18 mm dia. Mild steel bar for water tank including fixing (S.S.R. I.No. 41.56 P. No. 198)			1151.00
	TOTAL RATE Rs.			1151.00 RMT
30	Conveying materials obtained from excavation including all lifts,laying in layers of 20cm. to 30cm.breaking clods,dressing to the required lines,curves,grades and (S.S.R. I.No. 2.26 P. No. 24)			359.00
	TOTAL RATE Rs.			359.00 NOS
31	Providing preconstructional antitermite treatment as per I.S.6313(Part-II) by treating the top surface of plinth (S.S.R. I.No. 21.24 P. No. 117)			94.00
	TOTAL RATE Rs.			94.00 sqm
32	ADA compliant modular Multilingual and tactile Emergency evacuation map of each floor indicating the current position of the viewer saying "YOU ARE HERE" of 15 mm height letter sin red with white bac Kilogram round, indicating the emergency exits, locations of fire extinguishers etc. Signs shall have a solid header with the text "EVACUATION PLAN" in contrast in copper case (S.S.R. I.No. 51.74 P. No. 261)			19750.00
	TOTAL RATE Rs.			19750.00 NOS
<b>PART B: PEB WORK</b>				
1	Above Plinth PEB Structure - providing & erecting PEB structure with zincallume sheets etc.complete.			
	RATE ANALYSIS			5000.00
	ADD LEAD CHARGES FOR STEEL	1.00000		498.01
	TOTAL RATE Rs.			5498.01 sqm

**NAME OF WORK :- CONSTRUCTION OF 1/2000 MT CAP. WH BLDG WITH ANCILLARY WORKS IN  
GAT NO.- 259, AT WATHAWADA, TQ. KALLAM , DIST.OSMANABAD.**

**LEAD CHART (AS PER SSR-2021-22)**

<b>SR. NO.</b>	<b>MATERIAL</b>	<b>TYPE OF MATERIAL</b>	<b>LOCATION OF QUARRY</b>	<b>LEAD IN KM.</b>	<b>LEAD CHARGES</b>	<b>INITIAL LEAD CHARGES</b>	<b>NET LEAD CHARGES.</b>
1	CEMENT	MANUAL	KALLAM	40.00	498.01	0.00	498.01
2	SAND	MACHINE	GANGAKHED	110.00	1456.98	0.00	1456.98
3	CR METAL	MACHINE	KALLAM	40.00	660.06	0.00	660.06
4	40MM METAL CB	MACHINE	KALLAM	40.00	632.56	0.00	632.56
5	STEEL	MANUAL	KALLAM	40.00	498.01	0.00	498.01
6	BRICKS	MANUAL	KALLAM	40.00	1603.90	0.00	1603.90
7	MURUM-HARD	MACHINE	GAIRAN	30.00	511.51	0.00	511.51
8	GRANITE	MANUAL	KALLAM	40.00	49.80	0.00	49.80

**NAME OF WORK :- CONSTRUCTION OF 1/2000 MT CAP. WH BLDG WITH ANCILLARY WORKS  
IN GAT NO.- 259, AT WATHAWADA, TQ. KALLAM , DIST.OSMANABAD.**

**DIFF.COST OF MATERIAL**

<b>SR. NO.</b>	<b>MATERIAL</b>	<b>RATE AS PER SSR OF 2021-22</b>	<b>MARKET RATE</b>	<b>EXCESS</b>	<b>LESS</b>	<b>REMARKS/ EFFECTIVE DATE</b>
1	SAND	1575.00	2400.00	825.00	0.00	Rate As On
2	20MM METAL	996.00	1170.00	174.00	0.00	Rate As On
3	12MM METAL	996.00	1170.00	174.00	0.00	Rate As On
4	40MM METAL CB	991.00	850.00	0.00	141.00	Rate As On
5	BRICKS	8.00	8.50	0.50	0.00	Rate As On
6	MURUM-HARD	288.00	325.00	37.00	0.00	Rate As On

NAME OF WORK :- CONSTRUCTION OF 1/2000 MT CAP. WH BLDG WITH ANCILLARY WORKS IN GAT NO.- 259, AT WATHAWADA, TQ. KALLAM , DIST.OSMA

ROYALTY STATEMENT

SR. NO.	ITEM OF WORK	EXECUTED QUANTITY	NATURAL SAND		CEMENT IN BAGS		METAL		RUBBLE		MURUM	
			FACTOR	QTY.	FACTOR	QTY.	FACTOR	QTY.	FACTOR	QTY.	FACTOR	QTY.
1	Providing and laying Cast in situ/Ready Mix cement concrete in M-10 of trap/ granite/ quartzite/ gneiss metal for foundation and bedding including bailing out water formwork in situ/Ready Mix concrete	151.485	0.4700	71.20	4.40	666.53						
2	Providing and laying in situ/Ready Mix cement concrete M-20 of trap/ granite/quartzite/gneiss metal for R.C.C work in foundations like raft strip	51.840	0.4250	22.03	7.00	362.88						
3	Providing and laying Cast in situ /Ready Mix cement concrete M20 of trap /granite/quartzite/gneiss metal for R.C.C columns as per detailed designs and	24.851	0.4250	10.56	7.00	173.96						
4	Providing and laying Cast in situ /Ready Mix cement concrete M20 of trap/granite/quartzite/gneiss metal for R.C.C. beams and lintels as per detailed designs	45.788	0.4250	19.46	7.00	320.52						
5	Providing and laying Cast in situ/Ready Mix cement concrete M-20 of trap/ granite/ quartzite/ gneiss metal for R.C.C. PARDI as per detailed design and	0.324	0.4250	0.14	7.00	2.27						
6	Providing and laying Cast in situ /Ready Mix cement concrete M20 of trap/granite/ quartzite/gneiss metal for R.C.C. slab sand landings as per detailed designs and drawings including centering formwork cover	6.858	0.4250	2.91	7.00	48.01						
7	Providing and laying Cast in situ /Ready Mix cement concrete M-20 of trap/granite/quartzite/gneiss metal for R.C.C. Chajja as per detailed designs and drawings including centering formwork cover blocks	0.130	0.4250	0.06	7.00	0.91						
8	Providing soling using 80mm. size trap metal in 15cm. layer including filling voids with crushed sand/grit, ramming, watering etc. complete. Spec. No. As directed by Engineer in charge	281.743					1.16	326.82				
9	Filling in plinth and floors with contractors material/ brought from out side and approved by Engineer incharge in layers of 15 cm to 20 cm including	799.453									1.000	799.453
10	Providing masonry with conventional / Indian Standard type bricks in cement mortar 1:6 in foundation and plinth of inner walls / in plinth of	34.340	0.3200	10.99	1.58	54.26						
11	Providing masonry with conventional / Indian Standard type bricks in cement mortar 1:6 in superstructure including striking joints, raking out joints, watering and scaffolding complete. (Spec No B4.G.5 page No 315)	115.026	0.3200	36.81	1.58	181.74						
12	Providing internal cement plaster 6 mm thick in a single coat in cement mortar 1:4 without neeru finish to concrete surface in all positions including scaffolding and curing etc. complete. Spe. No.	63.000	0.0150	0.95	0.17	10.71						
13	Providing internal cement plaster 20 mm thick in single coat in cement mortar 1:5 without neeru finish to concrete or brick surfaces, in all positions including	536.492	0.0150	8.05	0.17	91.20						
14	Providing sand faced plaster externally in cement mortar using approved screened sand, in all positions including base coat of 15 mm thick in cement mortar	679.176	0.0150	10.19	0.22	149.42						
<b>Sub Work II Internal Road</b>												
6	Providing soling using 80 mm size trap metal in 15 cm. layer including filling voids with	147.35					1.32	194.50				
7	Supplying 80 mm trap stone metal at the road side including conveying & stacking etc.	194.50					1.32	256.74				
8	Supplying 40 mm trap stone metal at the road side including conveying & stacking etc.	129.67					1.32	171.16				
11	Supplying hard murum/ kankar at the road site, including conveying and stacking	353.64							1.20	424.36		
25	Providing uncoursed rubble masonry of trap / granite / quartzite / gneiss stones in cement	21.06			1.70	35.80					1.00	21.06
31	Supplying & spreading Hard murum for cushioning of R.C.C. pile including watering	0.18							1.20	0.22		
34	Providing earth work in embankment with approved materials obtained from other	10.00							1.20	12.00		
				<b>Total</b>	<b>193.336</b>		<b>2098.204</b>	<b>949.220</b>		<b>436.578</b>		<b>820.513</b>

**RAMBHAU AGRO FARMERS PRODUCER COMPANY LTD.**

**NAME OF WORK :- CONSTRUCTION OF 1/2000 MT CAP. WH BLDG WITH ANCILLARY WORKS IN GAT NO.- 259, AT WATHAWADA, TQ. KALLAM , DIST.OSMANABAD.**

**Royalty Charges Recovery Statements**

<b>Sr. No</b>	<b>Particulars</b>	<b>Required Quantity in Cum</b>	<b>Royalty Factor</b>	<b>Total Rate</b>	<b>Amount</b>
1	SAND	193.34		237.370	45892.23
2	METAL Hand broken	949.22		216.180	205202.34
3	MURUM	820.51		216.180	177378.50
					<b>428473.07</b>

**RAMBHAU AGRO FARMERS PRODUCER COMPANY LTD.**

**NAME OF WORK :- CONSTRUCTION OF 1/2000 MT CAP. WH BLDG WITH ANCILLARY WORKS IN GAT NO.- 259, AT WATHAWADA, TQ. KALLAM , DIST.OSMANABAD.**

**S.W. II - INTERNAL ROADS & CROSS DRAINAGE**

**MEASUREMENT SHEET**

Item Nos	Description of Items	NOS.			LENGTH	BREDTH	DEPTH / HIGHT	TOTAL QUANTITY	UNIT		
	<b>New Road</b>										
	Long Side	1	x	2	X	59.86	X	6.00	X	718.32	
	Short Side	1	x	2	X	22.00	X	6.00	X	264.00	
1	Excavation for roadway in earth, soil of all sorts, sand, gravel or soft murum including cum dressing section to the required grade, camber and side slopes and conveying the excavated materials outside the complex including all leads & lifts.									cum	
	<b>Road formation-New Road</b>										
	Long Side	1	x	2	X	59.86	X	6.00	X	0.6	430.99
	Long Side	1	x	2	X	22.00	X	6.00	X	0.6	158.40
									Total		589.39
									say		589.39
2	Picking the road surface including sectioning etc. complete (WBM surface.)										sqm
	Existing road										
	Long Side	1	x	2	X	59.86	X	6.00	X	0.075	53.87
	Short Side	1	x	2	X	22.00	X	6.00	X	0.075	19.80
									Total		73.67
									say		73.67
3	Excavation for roadway in hard murum and boulder including dressing section to the cum required grade, camber and side slopes and conveying the excavated materials with all lifts upto a lead of 50m.and spreading for embankment or stacking as directed.										
	<b>NEW ROAD</b>										
	Long Side	1	x	2	X	59.86	X	6.00	X	0.20	=
	Short Side	1	x	2	X	22.00	X	6.00	X	0.20	=
									Total	Net	1.00
									<b>Say</b>		<b>1.00</b>
4	Excavation for roadway in soft rock, including dressing section to the required grade, camber and side slopes and conveying the excavated materials with all lifts upto a lead of 50m. and spreading or stacking										cum
	<b>Road formation</b>										
	Provision										0.00
									Total	Net	1.00
									say		<b>1.00</b>
5	Excavation for roadway in hard rock by controlled blasting including dressing section to the required grade, camber and side slopes and conveying the excavated materials with all lifts upto a lead of 50m.and spreading for embankment or stocking as directed.										cum
	<b>Road formation</b>										
	Provision										1.00
									Total	Net	1.00
									say		<b>1.00</b>
6	Providing soling using 80 mm size trap metal in 15 cm. layer including filling voids with Crushed sand/grit, ramming, watering etc. complete.										cum

	<b>Road formation</b>												
	<b>New Road</b>												
	Long Side	1	x	2	X	59.86	X	6.00	X	0.15	=	107.75	

	Long Side	1	x	2	X	22.00	X	6.00	X	0.15	=	39.60	
								Total		Net		147.35	
										Say		147.35	cum
7	Supplying 80 mm trap stone metal at the road side including conveying & stacking etc. complete.												cum
	<b>New Road</b>												
	Long Side	1	x	2	X	59.86	X	6.00	X	0.15	=	107.75	
	Long Side	1	x	2	X	22.00	X	6.00	X	0.15	=	39.60	
										Total		147.35	
	Add 32. % Voids											47.15	
										Say		194.50	
										Say		194.50	cum
8	Supplying 40 mm trap stone metal at the road side including conveying & stacking etc.												cum
	<b>New Road</b>												
	Long Side	1	x	2		59.86	X	6.00	X	0.10		71.83	
	Long Side	1	x	2		22.00	X	6.00	X	0.10		26.40	
										Total		98.23	
	Add for Compaction factor 32%											31.43	
										Total		129.67	
										Say		129.67	cum
9	Spreading 80 mm trap stone metal including sectioning as directed etc. complete.												
	Qty. as per item 7											194.50	
										Total		194.50	
										Say		194.50	cum
10	Spreading 40 mm trape stone metal including sectioning as directed etc. complete.												
	Qty. as per item 8											129.67	
										Total		129.67	
										Say		129.67	cum
11	Supplying hard murum/ kankar at the road site, including conveying and stacking complete.												cum
	<b>New Road</b>												
	Long Side	1	x	2	X	59.86	X	6.00	X	0.05	=	35.92	
	Long Side	1	x	2	X	22.00	X	6.00	X	0.05	=	13.20	
	For side shoulder												
	Long Side	1	x	2	X	59.86	X	6.00	X	0.25	=	79.58	
	Long Side	1	x	2	X	22.00	X	6.00	X	0.25	=	66.00	
										Total		294.70	
										Add for Compaction 20%		58.94	
										Total		353.64	
										say		353.64	
12	Spreading hard murum/ soft murrum/ gravel or kankar for side width complete												
	Qty. as per item 11											353.64	
										Total		353.64	
										say		353.64	
13	Compacting oversize metal layer with H. M. with power roller including artificial watering & necy. Labour etc. complete												sqm
	For Rubble soiling	1	X	982.32								982.32	
	For 80mm	1	X	982.32								982.32	
	For 40mm	1	X	982.32								982.32	
										Total		2946.96	
										say		2946.96	
14	Compacting the hard murum side widths including laying in layers on each side with vibratory roller including artificial watering etc. complete												sqm
	<b>For side Shoulder</b>												
	Long Side I-J	1		2	X	59.86	X	0.50			=	59.86	
	Long Side G-H	1		2	X	22.00	X	0.50			=	22.00	
										Total		81.86	
										say		81.86	Sqm
15	Providing and constructing 75 mm. thick Modified Penetration Macadam (MPM) road surface including all materials, preparing the existing road surface, spreading 40 mm. stone metal layers 100% crusher broken metal with conical crusher plant heating and spraying the bitumen of specified grade @ 2 Kiloqram/Square Metre. spreading 12 mm size chips compacting with three												Sqm
	<b>New Road</b>												
	Long Side	1	x	2	X	59.86	X	6.00			=	718.32	

	Long Side	1	x	2	X	22.00	X	6.00		=	264.00		
										Total	=	982.32	
										Say	=	<b>982.32</b>	Sqm
16	Providing and applying tack coat on the prepared surface heating by fumes in Boiler and spraying bitumen set footed in bitumen boiler on B.T. surface 2.5 kg/10 sqm.(VG-30 bulk bitumen rates are considered to arrive at rates)												
	Long Side I-J	1	x	2	X	59.86	X	6.00		=	718.32		
	Long Side G-H	1	x	2	X	22.00	X	6.00		=	264.00		
										Total	=	982.32	
										Say	=	<b>982.32</b>	Sqm
17	Open Graded Premix Surfacing- Providing and Laying OGC 20 mm thickness composed of 13.2 mm to 5.6 mm aggregates premixed with bituminous binder @ 1.56 Kg/Sqm transported to site with VTS, laid over a previously prepared surface, finished to the required grade, level, alignment, and rolling to achieve the desired compaction but excluding prime / tack and Seal coat. For Bitumen of specified												
	<b>for existing Road &amp; New road</b>	1.00	x	982.32	x					=	982.32		
										Total	=	982.32	
										Say	=	<b>982.32</b>	Sqm
18	9 MM SEAL COAT: Providing and laying of Type A 9 mm premix seal coat with HMP of appropriate capacity crushed stone chipping 6.7 mm size and penetration bitumen of specified grade @ 1.2 kg/Sq.m, preparing existing road surface by mechanical means, spreading chips and rolling, by static roller having weight 8 to 10 MT etc. complete. (VG- 30 bulk bitumen rates are considered to arrive at rates)												
		1.00	x	982.32	x					=	982.32		
										Total	=	982.32	
										Say	=	<b>982.32</b>	Sqm
19	Providing & fixing R. C. C. 1:2:4 guard stones as per type design including painting numbering fixing in std. Size C. C. 1:4:8 block complete.												
	Lumpsum considered											75.00	
										Total		75.00	
										Say		<b>75.00</b>	Nos
<b>PART II :- CROSS DRAINAGE WORKS</b>													
20	Excavation for foundation in earth, soil of all types, sand, gravel and soft murum, including removing the excavated material up to a distance of 50 m. beyond the building area and stacking and spreading as directed, dewatering, preparing the bed for the foundation and necessary back filling, ramming, watering including shoring and strutting etc. complete (Lift upto 1.5 m) By Mechanical Means												
	CD Works	1	x	2	x	10.00	x	1.50	x	0.75	=	22.50	
	CD work Head wall	1	x	2	x	2.00	x	0.75	x	0.15	=	0.45	
										Total		22.95	
										Say		<b>22.95</b>	cum
21	Excavation for foundation in hard murum including removing the excavated material upto a distance of 50 metres beyond the building area and stacking and spreading as directed, dewatering, preparing the bed for the foundation and necessary back filling, ramming, watering including shoring and strutting etc. complete (Lift upto 1.50 m) By Mechanical Means												
	C D Works	1	x	2	x	10.00	x	1.50	x	0.15	=	4.50	
	App. CD work Head wall	1	x	2	x	2.00	x	0.75	x	0.15	=	0.45	
										Total		4.95	
										Say		<b>4.95</b>	cum
22	Excavation for foundation in Hard murum including removing the excavated material upto a distance of 50 metres beyond the building area and stacking and spreading as directed, dewatering, preparing the bed for the foundation and necessary back filling, ramming, watering including shoring and strutting etc. complete (Lift from 1.5 to 3.0m) By Mechanical Means												
	C D Works	1	x	2	x	30.00	x	1.50	x	0.10	=	9.00	
	App. CD work Head wall	1	x	2	x	2.00	x	0.75	x	0.10	=	0.30	
										Total		9.30	
										Say		<b>9.30</b>	cum
23	Excavation for foundation in Hard rock by chiselling, wedging, line drilling, etc. including trimming and levelling the bed, removing the excavated material upto a distance of 50 metres beyond the building area stacking as directed, dewatering and back filling with available earth/ murum watering												
										Total		1.00	

									say		<b>1.00</b>	
24	Providing and laying Cast in situ/Ready Mix cement concrete in M-10 of trap/ granite/ quartzite/ gneiss metal for foundation and bedding including bailing out water, Steel centering, formwork,laying/pumping, compacting, roughening them if special finish is to be provided, finishing if required and curing complete, with fully automatic micro processor based PLC with SCADA enabled <del>reversible Drum Type mixer/concrete Batch mix plant (Dry mixer) etc complete With fine aggregate</del>											cum
C D Works		1	x	2	x	30.00	x	1.50		0.10	=	9.00

	App. CD work Head wall	1	x	2	x	2.00	x	0.75		0.10	=	0.30	
										Total		9.30	
										say		<b>9.30</b>	
25	Providing uncoursed rubble masonry of trap / granite / quartzite / gneiss stones in cement mortar 1:6 in foundation and plinth of inner walls / in plinth of external walls including bailing out water manually, striking joints on un exposed faces and watering etc.complete.(Crushed sand VSI												cum
	CD Works	2	x	2	x	30.00	x	0.45		0.35	=	18.90	
	App. CD work Head wall	1	x	2	x	2.00	x	0.45		1.20	=	2.16	
										Total		21.06	
										say		<b>21.06</b>	
26	Providing and fixing in position TMT - FE - 500 bar reinforcement of various diameters for R.C.C. pile caps, footings, foundations, slabs,beams columns, canopies, staircase, newels, chajjas, lintels pardis,copings, fins, arches etc. as per detailed designs, drawings and schedules. including cutting, bending, hooking the bars, binding with wires or tack welding and supporting as required complete.												kg
	21 kgs/cum	6		1				210				1260.00	
										Total		1260.00	
										say		<b>1.26</b>	mt
27	Providing and laying Cast in situ/Ready Mix cement concrete M-25 of trap/ granite / quartzite/ gneiss metal for R.C.C. slabs and landings as per detailed designs and drawings including steel centering, formwork, cover blocks, laying/pumping, compaction finishing the formed surfaces with cement mortar 1:3 of sufficient minimum thickness to give a smooth and even surface or roughening slab	1		2		10		1.2		0.3		7.20	cum
										Total		7.20	
										say		<b>7.20</b>	
28	Providing flush grooved pointing with cement mortar 1:3 for brick work including scaffolding and curing etc. complete.												sqm
		2		2		2				0.65		5.20	
		2		2		2				0.65		5.20	
										Total		5.20	
										say		<b>5.20</b>	
29	Providing and laying cement concrete pipe of IS 458:2003 NP-2 class of 600mm diameter in proper line, level and slope including providing and fixing collars in cement mortar 1:2 and curing etc. complete.												Rmt
	ISNP III Class Pipe	1		1		10						10.00	
										Total		10.00	
										say		<b>10.00</b>	
30	Supplying & spreading Hard mumrum for cushioning of R C C pipe including watering ramming & leveling etc complete.												
	ISNP III Class Pipe	1		1		10		1.5		0.9		13.50	
										Total		13.50	
										say		<b>13.50</b>	
31	Providing and casting in situ / ready mix PCC M15 grade of trap metal for coping to head walls / parapet including centering, form work, compaction and curing etc. complete. (Crushed sand VSI Grade)												
	App cd work head wall	1		2		2		0.45		0.1		0.18	
	Above C.C. Pipe	1		2		10		1.5		0.15		0.18	
										Total		0.18	
										say		<b>0.18</b>	
32	Providing earth work in embankment with approved materials obtained from departmental land upto lead of 50m. including all lifts,laying in layers of 20cm. to 30cm. thickness breaking clods, dressing to the required lines, curves, grades & section, watering and compaction with vibratory roller to achieve not less than 97 % of standard proctor density etc. complete. (Material obtained from departmental Land)												cum
	Provision											10.00	
										Total		10.00	
										Say		10.00	cum
33	Providing earth work in embankment with approved materials obtained from other sources upto lead of 50m. including all lifts, laying in layers of 20cm. to 30cm. thickness breaking clods, dressing to the required lines, curves, grades & section, watering and compaction with vibratory roller with V-Satattachment to achieve not less than 97 % of standard proctor density etc. complete ( Material obtained from Other sources)												cum
	<b>Road formation New Road</b>												
	Long Side I-J	1	x	2	X	59.86	X	6.00	X	0.30	=	215.50	
	Long Side G-H	1	x	2	X	22.00	X	6.00	X	0.30	=	79.20	
										Net		294.70	
										<b>Say</b>		<b>294.70</b>	cum



**RAMBHAU AGRO FARMERS PRODUCER COMPANY LTD.**

**NAME OF WORK :- CONSTRUCTION OF 1/2000 MT CAP. WH BLDG WITH ANCILLARY WORKS IN GAT NO.- 259, AT WATHAWADA, TQ. KALLAM , DIST.OSMANABAD**  
**S.W. II - INTERNAL ROADS & CROSS DRAINAGE**

**ABSTRACT SHEET (Based on PWD SSR 2021-22 & Market rates)**

SR. NO.	DESCRIPTION OF ITEM	QUANTITY	UNIT	I.N./ P.N	BASIC RATE	ALL LEAD & ROYALTY	For Scada	TOTAL	Add % Q.C. Charges 0.005	TOTAL OF RATES 6 TO 10	AMOUNT
1	2	3	4	5	6	7	8	9	10	11	12
<b>PART-I : INTERNAL ROADS</b>											
1	Excavation for roadway in earth, soil of all sorts, sand, gravel or soft murum including d	589.39	cum	2.11/23	104.00			104.00		104.00	61296.77
2	Picking the road surface including sectioning etc. complete (WBM surface.)	73.67	Sqm	2.32/25	28.00			28.00		28.00	2062.87
3	Excavation for roadway in hard murum and boulder including dressing section to the re	1.00	cum	2.13/23	121.00			121.00		121.00	121.00
4	Excavation for roadway in soft rock, including dressing section to the required grade. c	1.00	cum	2.14/23	157.00			157.00		157.00	157.00
5	Excavation for roadway in hard rock by controlled blasting including dressing section to	1.00	cum	2.15/23	250.00			250.00		250.00	250.00
6	Providing soiling using 80 mm size trap metal in 15 cm. layer including filling voids with	147.35	cum	21.40/118	1322.00			1322.00		1322.00	194794.06
7	Supplying 80 mm trap stone metal at the road side including conveying & stacking etc.	194.50	cum	50.56/250	700			700.00		700.00	136149.55
8	Supplying 40 mm trap stone metal at the road side including conveying & stacking etc.	129.67	cum	50.55/250	780			780.00		780.00	101139.67
9	Spreading 80 mm trap stone metal including sectioning as directed etc. complete.	194.50	cum	50.58/250	85.00			85.00		85.00	16532.45
10	Spreading 40 mm trape stone metal including sectioning as directed etc. complete.	129.67	cum	50.58/250	85.00			85.00		85.00	11021.63
11	Supplying hard murum/ kankar at the road site, including conveying and stacking compl	353.64	cum	2.29/24	398.00			398.00		398.00	140746.81
12	Spreading hard murum/ soft murrum/ gravel or kankar for side width complete	353.64	cum	2.30/24	74.00			74.00		74.00	26169.00
13	Compacting oversize metal layer with H. M. with power roller including artificial waterin	2946.96	sqm	50.59/250	27.00			27.00		27.00	79567.92
14	Compacting the hard murum side widths including laying in layers on each side with vib	81.86	sqm	2.31/24	19.00			19.00		19.00	1555.34
15	Providing and constructing 75 mm. thick Modified Penetration Macadam (MPM) road su	982.32	Sqm	RA	223.14			223.14		223.14	217511.98
16	Providing and applying tack coat on the prepared surface heating by fumes in Boiler an	982.32	Sqm	RA	14.73			14.73		14.73	14469.57
17	Open Graded Premix Surfacing- Providing and Laying OGC 20 mm thickness compose	982.32	sqm	RA	118.82			118.82		118.82	116719.26
18	9 MM SEAL COAT: Providing and laying of Type A 9 mm premix seal coat with HMP of	982.32	sqm	RA	84.32			84.32		84.32	82829.22
19	Providing & fixing R. C. C. 1:2:4 guard stones as per type design including painting num	75.00	Nos	11.27/63	963			963.00		963.00	72225.00
<b>PART II :- CROSS DRAINAGE WORKS</b>											
20	Excavation for foundation in earth, soil of all types, sand, gravel and soft murum, includi	22.95	cum	21.02/115	193.00			193.00		193.00	4429.35
21	Excavation for foundation in hard murum including removing the excavated material upt	4.95	cum	21.06/115	212.00			212.00		212.00	1049.40
22	Excavation for foundation in Hard murum including removing the excavated material up	9.30	cum	21.07/115	403.00			403.00		403.00	3747.90
23	Excavation for foundation in Hard rock by chiselling, wedging, line drilling, etc. including	1.00	cum	21.20/116	1223.00			1223.00		1223.00	1223.00
24	Providing and laying Cast in situ/Ready Mix cement concrete in M-10 of trap/ granite/ qu	9.30	cum	24.01/131	5538		-120.00	5418.00		5418.00	50387.40
25	Providing uncoursed rubble masonry of trap / granite / quartzite / gneiss stones in ceme	21.06	cum	28.01/146	4757.00			4757.00		4757.00	100182.42
26	Providing and fixing in position TMT - FE - 500 bar reinforcement of various diameters f	1.26	MT	26.33/139	71778.00			71778.00		71778.00	90440.28
27	Providing and laying Cast in situ/Ready Mix cement concrete M-25 of trap/ granite / qua	7.20	cum	25.50/135	11483.00		-120.00	11363.00		11363.00	81813.60
28	Providing flush grooved pointing with cement mortar 1:3 for brick work including scaffol	5.20	sqm	32.17/153	172.00			172.00		172.00	894.40
29	Providing and laying cement concrete pipe of IS 458:2003 NP-2 class of 600mm diame	10.00	Rmt	11.09/62	2678			2678.00		2678.00	26780.00
30	Supplying & spreading Hard murum for cushioning of R C C pipe including watering r	13.50	cu m	2.27/24	201.00			201.00		201.00	2713.50
31	Providing and casting in situ / ready mix PCC M15 grade of trap metal for coping to hea	0.18	cu m	11.30/63	9276.00			9276.00		9276.00	1669.68
32	Providing earth work in embankment with approved materials obtained from departmen	10.00	cum	2.27/24	201.00			201.00		201.00	2010.00
33	Providing earth work in embankment with approved materials obtained from other sourc	294.70	cum	2.28/24	546.00			546.00		546.00	160904.02
34	Conveying materials obtained from road cutting including all lifts, laying in layers of 20c	10.00	cum	2.25/24	177.00			177.00		177.00	1770.00

35	Conveying the materials obtained from excavation including all lifts, laying in layers, bre	589.39	cum	5km/lead	220.06			220.06		220.06	129701.60
	<b>TOTAL</b>										<b>1936718.56</b>

**RAMBHAU AGRO FARMERS PRODUCER COMPANY LTD.**

NAME OF WORK :- CONSTRUCTION OF 1/2000 MT CAP. WH BLDG WITH ANCILLARY WORKS IN GAT NO.- 259,  
AT WATHAWADA, TQ. KALLAM , DIST.OSMANABAD.

**S.W. III - Electrification OF 1/2000 MT W.H.**

**MEASUREMENT SHEET**

SR. NO.	Description of Items	NO.	LENGTH	BREDTH	DEPTH	TOTAL	UNIT
1	Supplying, erecting & terminating XLPE armoured cable 3 core 6 sq. mm. copper conductor continuous 5.48 sq. mm. (12 SWG) G.I. earth wire complete erected with glands & lugs, on wall/ trusses/ pole or laid in provided trench/ pipe as per specification no. CB-LT/CU For WH 2000 MT	1 X 1 X	30 X	1 X	1 =	30.00	Running Meter
					Total	30.00	
					<b>Say</b>	<b>30.00</b>	
2	Making trench of suitable width and depth in hard murum / tar road for laying provided LT cable up to and including 16 sq. mm complete as per specification no. CW-EXNCTR For WH 2000 MT	1 X 1 X	30 X	1 X	1 =	30.00	Running Meter
					Total	30.00	
					<b>SAY</b>	<b>30.00</b>	
3	Making trench of suitable width and depth in soft soil for laying provided LT cable up to and including 16 sq.mm complete as per specification no. CW-EXN-CTR For WH 2000 MT	1 X 1 X	10 X	1 X	1 =	10.00	Running Meter
					Total	10.00	
					<b>Say</b>	<b>10.00</b>	
4	Supplying & erecting mains PVC unarmoured cable 1100Volt grade ISI mark 3 core / 2.5 sqmm stranded / solid copper complete erected on wall with duly painted G. I. Saddle @ 0.25 m C/C & rigidly grouted in the wall with the help of plated screws. For WH 2000 MT	1 X 130 X	1 X	1 X	1 =	130.00	Running Meter
					Total	130.00	
					<b>Say</b>	<b>130.00</b>	
5	Supplying & erecting weatherproof powder coated distribution board 4 way with 2 x 6/10 Amp S. P. M. C. B. with industrial two pin plug socket 10 A and 3 pin plug top 10 A with top cover necessary connection etc complete with approved make. For WH 2000 MT	2 X 6 X	1 X	1 X	1 =	12.00	Number
					Total	12.00	
					<b>Say</b>	<b>12.00</b>	
6	Providing point wiring for street light with PVC unarmoured cable 1100Volt grade ISI mark 3 core 1.5 sqmm stranded / solid copper erected on wall with G. I. Saddle duly painted @ 0,25 m C/C rigidly aouted in the wall with the help of plated screw including a 4" x 4" M. S. box 2 way with For WH 2000 MT	2 X 5 X	1 X	1 X	1 =	10.00	Number
					Total	10.00	
					<b>Say</b>	<b>10.00</b>	
7	Supplying & erecting 10-12W, 230V integral type LED Lamp suitable for B-22/E-27 base. For WH 2000 MT	2 X 4 X	1 X	1 X	1 =	8.00	Number
					Total	8.00	
					<b>Say</b>	<b>8.00</b>	
8	Supplying and erecting LED street light fitting suitable for 20 to 25W, with PF > 0.95 class IP 65 and above housing of pressure die cast aluminium alloy and heat sink extruded aluminium complete as per specification No FG-ODF/FLS For WH 2000 MT	2 X 4 X	1 X	1 X	1 =	8.00	Number
					Total	8.00	
					<b>Say</b>	<b>8.00</b>	
9	Supplying and erecting street light Wall bracket made from 40 mm. dia 'B' class G.I. pipe 1.2 m in total length complete as per specification no. FG-BKT/WB For WH 2000 MT	1 X 1 X	1 X	1 X	1 =	1.00	Number
					Total	1.00	

									<b>SAY = 1.00</b>	
10	Providing earthing with galvanized iron earth plate size 60 x 60 x 0.6 cm complete with all materials, testing & recording the results as per specification no. EA-EP									Number
	For WH 2000 MT	1	X	1	X	1	X	1	X	1.00
									Total = 1.00	
									<b>SAY = 1.00</b>	
11	Providing pipe type earthing with 40mm. dia. G.I. pipe or 20 mm dia. G.I. Rod complete with all materials as per specification no. EA-EP Providing pipe type earthing with 40mm. dia. G.I. pipe or 20 mm dia. G.I. Rod complete with all materials as per specification no. EA-EP									
	For WH 2000 MT	1	X	1	X	1	X	1	X	1.00
									Total = 1.00	
									<b>SAY = 1.00</b>	
12	Supplying, erecting & marking DPMCB 6A to 32A, C- series (for motor/power) in provided distribution board as per specification no. SW-SWR/MCB									
	For WH 2000 MT	1	X	1	X	1	X	1	X	1.00
									Total = 1.00	
									<b>SAY = 1.00</b>	
13	Supplying, erecting & marking SPMCB 6A to 32A, B- series (for lighting) in provided distribution board as per specification no. SW-SWR/MCB									
	For WH 2000 MT	1	X	1	X	1	X	1	X	1.00
									Total = 1.00	
									<b>SAY = 1.00</b>	
14	Supplying and erecting GI sheet 1.6 mm (16 SWG) to be used for fabrication of boxes panel boards etc. including cutting, bending, drilling, welding, riveting etc. and painting with one coat of red lead									Square Meter
	For WH 2000 MT	1	X	1	X	1	X	1	X	1.00
									Total = 1.00	
									<b>SAY = 1.00</b>	
15	Supplying and erecting marine plywood 18/19 mm thick fixed to wall or on provided panel board with necessary materials such as screws, wall fasteners, supports, nut bolts etc. complete.									Square Meter
	For WH 2000 MT	1	X	1	X	1	X	1	X	1.00
									Total = 1.00	
									<b>SAY = 1.00</b>	
16	Supplying and erecting triple phase and neutral distribution board (TPNDB) surface/ flush mounted									Number
	For WH 2000 MT	1	X	4	X	1	X	1	X	4.00
									Total = 4.00	
									<b>SAY = 4.00</b>	
17	Supplying & erecting G.I. pipe 'A' class 25 mm dia. erected for enclosing XLPE armoured cable on wall/pole as per specification no. CB-CE									Running Meter
	For WH 2000 MT	1	X	20	X	1	X	1	X	20.00
									Total = 20.00	
									<b>SAY = 20.00</b>	
18	Supplying & erecting G.I. pipe 'A' class 40 mm dia. erected for enclosing XLPE armoured cable on wall/pole as per specification no. CB-CE									Running Meter
	For WH 2000 MT	1	X	12	X	1	X	1	X	12.00
									Total = 12.00	
									<b>SAY = 12.00</b>	
19	Supplying and laying (including excavation of suitable width & depth up to 90 cm) 75 mm outside dia. double wall corrugated pipes (DWC) of HDPE for enclosing cable below ground/road surface, to required depth complete.									Running Meter
	For WH 2000 MT	2	X	12	X	1	X	1	X	24.00
									Total = 24.00	
									<b>SAY = 24.00</b>	
20	Supplying & erecting 18 guage M.S. Box powder coated (4"x4") 3 way for mains									Number
	For WH 2000 MT	1	X	4	X	2	X	1	X	8.00
									Total = 8.00	
									<b>SAY = 8.00</b>	
21	Supplying & erecting Siemens type brass cable glands for 3 to 4 core 6 sq. mm. /2 to 4 core 10 sq. mm. for XLPE armoured cable as per specification No. CB-GL									Number
	For WH 2000 MT	1	X	3	X	2	X	1	X	6.00
									Total = 6.00	
									<b>SAY = 6.00</b>	

22	Supplying shockproof type hand lamp with lamp holder, bulb/ lamp 100 W guarded glass and 30 mtr. 3 core PVC flexible cord with hand shield type 3 pin 6 Amp. Plug top. For WH 2000 MT	1	X	3	X	2	X	1	X	1	=	6.00	
										Total	=	6.00	
										<b>SAY</b>	=	<b>6.00</b>	
23	Point wiring for independent plug in 20 mm ISI marked HMS PVC conduit with 1.5 sq.mm (2+1E) FRLSH grade copper wire, flush type switch, earthing and required accessories as per specification No: WG-PW/SW For WH 2000 MT	1	X	3	X	2	X	1	X	1	=	6.00	
										Total	=	6.00	
										<b>SAY</b>	=	<b>6.00</b>	
24	Power point wiring for geaser / Refrigerator with ISI mark 2 x 2.50 Sq.mm copper PVC insulated wire 1.1 KV grade in PVC casing-caping with double locking arrangement with 1 x 1.00 Sq.mm copper PVC insulated wire for earthing on wall / ceiling with necessary G.I.screws etc. fixed at an internal of net For WH 2000 MT	1	X	4	X	2	X	1	X	1	=	8.00	
										Total	=	8.00	
										<b>SAY</b>	=	<b>8.00</b>	
25	Supplying & erecting mains with 2 x 2.5 Sq.mm stranded copper PVC insulated wire with 2 x 1.5 Sq.mm copper PVC wire in PVC casing - caping 20 mm on wall / ceiling. For WH 2000 MT	1	X	4	X	2	X	1	X	1	=	8.00	RGM
										Total	=	8.00	
										<b>SAY</b>	=	<b>8.00</b>	
26	Supplying & erecting main with 2 x 4.00 Sq.mm stranded copper PVC insulated wire with 2 x 1.5 Sq.mm copper PVC wire in PVC casing - caping on wall / ceiling. Supplying and erecting double For WH 2000 MT	1	X	4	X	2	X	1	X	1	=	8.00	RGM
										Total	=	8.00	RGM
										<b>SAY</b>	=	<b>8.00</b>	
27	Fuse as per specification no. SW-SWR/BDP. For WH 2000 MT	1	X	5	X	2	X	1	X	1	=	10.00	
										Total	=	10.00	
										<b>SAY</b>	=	<b>10.00</b>	
28	Supplying and erecting double pole metal clad switch with HC type fuse and neutral link 240V, 32A on iron / GI frame as per specification no. SW-SWR/MDP. For WH 2000 MT	1	X	4	X	2	X	1	X	1	=	8.00	
										Total	=	8.00	
										<b>SAY</b>	=	<b>8.00</b>	
29	Supplying & erecting 3W, 230V integral type LED Lamp suitable for B-22/E-27 base. For WH 2000 MT	1	X	4	X	2	X	1	X	1	=	8.00	
										Total	=	8.00	
										<b>SAY</b>	=	<b>8.00</b>	
30	Supplying and erecting T8 Fluorescent tube day light 1200mm 36 W For WH 2000 MT	1	X	3	X	2	X	1	X	1	=	6.00	NUMBER
										Total	=	6.00	
										<b>SAY</b>	=	<b>6.00</b>	
31	Supplying & erecting ready to use Retrofit T8 LED 18 / 20 tube light with polycarbonate body, heat sink, integrated HF electronic driver complete & compatible to T8 / T12 LED luminaire by For WH 2000 MT	1	X	4	X	2	X	1	X	1	=	8.00	
										Total	=	8.00	
										<b>SAY</b>	=	<b>8.00</b>	
32	Supplying and erecting regular/ standard model ceiling fan of 900 /1050 mm. sweep complete erected in position as per specification no. FG-FN/CF For WH 2000 MT	1	X	5	X	2	X	1	X	1	=	10.00	SQ.M.
										Total	=	10.00	
										<b>SAY</b>	=	<b>10.00</b>	
33	Supplying and fixing wiremesh (Jali) cover suitable for fitting / fan or for any purpose, complete with necessary materials. The jali cover shall be made from good quality G.I. wire mesh size 25 x 25 (mm) and made up of 14 SWG G.I. wire with side / supporting MS strips of suitable size. For WH 2000 MT	1	X	4	X	2	X	1	X	1	=	8.00	
										Total	=	8.00	
										<b>SAY</b>	=	<b>8.00</b>	
34	Supplying and erecting ding dong / electronic musical type call bell with heavy duty coil suitable to operate on 230V A.C. supply erected on polished double wooden block/sunmica block of suitable size												

For WH 2000 MT	1	X	3	X	2	X	1	X	1	=	6.00	
									Total	=	6.00	
									<b>SAY</b>	=	<b>6.00</b>	
35 Supplying and erecting street light Wall bracket made from 25 mm. dia 'B' class G.I. pipe 1.2 m in total length complete as per specification no. FG-BKT/WB												
For WH 2000 MT	1	X	3	X	2	X	1	X	1	=	6.00	
									Total	=	6.00	
									<b>SAY</b>	=	<b>6.00</b>	
36 Supplying & erecting CRCA sheet metal one wayenclosures suitable for DP MCB /TP MCB /FP MCB erected on angle iron/GI frame complete.												Number
For WH 2000 MT	1	X	1	X	1	X	1	X	1	=	1.00	
									Total	=	1.00	
									<b>SAY</b>	=	<b>1.00</b>	
37 Supplying erecting and marking four pole isolators only switch version of miniature circuit breakers of 40A in provided distribution board complete												Number
For WH 2000 MT	1	X	1	X	1	X	1	X	1	=	1.00	
									Total	=	1.00	
									<b>SAY</b>	=	<b>1.00</b>	

**RAMBHAU AGRO FARMERS PRODUCER COMPANY LTD.**

**NAME OF WORK :- CONSTRUCTION OF 1/2000 MT CAP. WH BLDG WITH ANCILLARY WORKS IN GAT NO.- 259, AT WATHAWADA, TQ. KALLAM , DIST.OSMANABAD.**

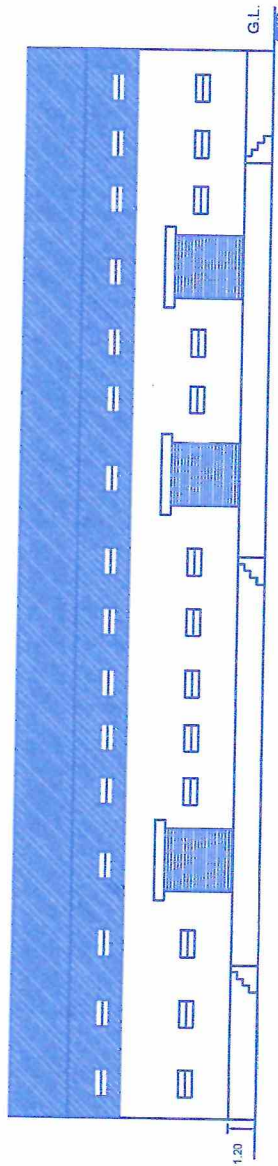
**S.W.III - Electrification OF W.H. 1/2000 MT**

**Abstract Sheet (Based on PWD Electrical CSR 2021-22 & Market rates)**

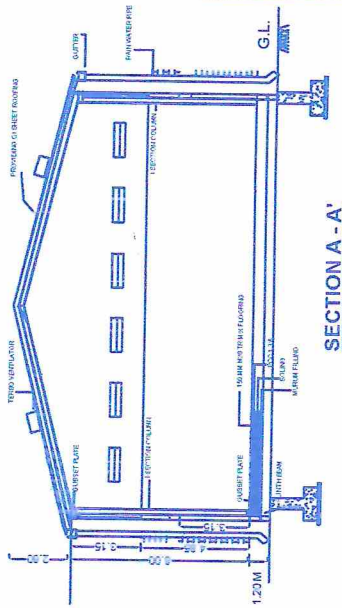
I.N.	DESCRIPTON OF ITEM	QUANTITY	UNIT	I.N./P.N.	RATE		Add 5% other than Dist.Place	Total of 6+7		AMOUNT	
					Rs.	Ps.		Rs.	Ps.	Rs.	Ps.
1	2	3	4	5	6	7	8	9			
1	Supplying, erecting & terminating XLPE armoured cable 3 core 6 sq. mm. copper conductor continuous 5.48 sq. mm. (12 SWG) G.I. earth wire complete erected with glands & lugs on wall/ trusses/ pole or laid	30.00	Running Meter	7-2-16/129	283.00	14.15	297.15	8914.50			
2	Making trench of suitable width and depth in hard murum / tar road for laying provided LT cable up to and including 16 sq. mm complete as per specification no. CW-EXN-CTR	30.00	Running Meter	16-1-2/239	193.00	9.65	202.65	6079.50			
3	Making trench of suitable width and depth in soft soil for laying provided LT cable up to and including 16 sq. mm complete as per specification no. CW-EXN-CTR	10.00	Running Meter	16-1-1/239	156.00	7.80	163.80	1638.00			
4	Supplying & erecting mains PVC unarmoured cable 1100Volt grade ISI mark 3 core / 2.5 sqmm stranded / solid copper	130.00	Running Meter	RA	125.60	6.28	131.88	17144.40			
5	Supplying & erecting weatherproof powder coated distribution board 4 way with 2 x 6/10 Amp S. P. M. C. B. with industrial two pin plug socket 10 A and	12.00	Number	RA	1290.00	64.50	1354.50	16254.00			
6	Providing point wiring for street light with PVC unarmoured cable 1100Volt grade ISI mark 3 core 1.5 sqmm stranded / solid copper erected on wall with G.I. Saddle duly painted @ 0.25 m C/C rigidly mounted in	10.00	Number	RA	1223.60	61.18	1284.78	12847.80			
7	Supplying & erecting 10-12W, 230V integral type LED Lamp suitable for B-22/E-27 base.	8.00	Number	2-10-11/42	230.00	11.50	241.50	1932.00			
8	Supplying and erecting LED street light fitting suitable for 20 to 25W, with PF > 0.95 class IP 65 and above housing of pressure die cast aluminium alloy and heat sink extruded aluminium complete as per specification	8.00	Number	2-5-2/34	2009.00	100.45	2109.45	16875.60			
9	Supplying and erecting street light Wall bracket made from 40 mm. dia 'B' class G.I. pipe 1.2 m in total length complete as per specification no. FG-BKT/WB	1.00	Number	2-9-4/38	712.00	35.60	747.60	747.60			
10	Providing earthing with galvanized iron earth plate size 60 x 60 x 0.6 cm complete with all materials, testing & recording the results as per specification no. EA-EP	1.00	Number	9-1-1/159	4238.00	211.90	4449.90	4449.90			
11	Providing pipe type earthing with 40mm. dia. G.I. pipe or 20 mm dia. G.I. Rod complete with all materials as per specification no. EA-EP	1.00	Number	9-1-4/159	1355.00	67.75	1422.75	1422.75			
12	Supplying, erecting & marking DPMCB 6A to 32A, C-series (for motor/power) in provided distribution board as per specification no. SW-SWR/MCB	1.00	Number	5-3-6/94	488.00	24.40	512.40	512.40			
13	Supplying, erecting & marking SPMCB 6A to 32A, B-series (for lighting) in provided distribution board as per specification no. SW-SWR/MCB	1.00	Number	5-3-3/94	164.00	8.20	172.20	172.20			
14	Supplying and erecting GI sheet 1.6 mm (16 SWG) to be used for fabrication of boxes panel boards etc. including cutting, bending, drilling, welding, riveting etc. and painting with one coat of red lead paint and 2	1.00	Square Meter	6-1-2/112	2264.00	113.20	2377.20	2377.20			
15	Supplying and erecting marine plywood 18/19 mm thick fixed to wall or on provided panel board with necessary materials such as screws, wall fasteners, supports,	1.00	Square Meter	6-1-14/113	1342.00	67.10	1409.10	1409.10			
16	Supplying and erecting triple pole and neutral distribution board (TPNDB) surface/ flush mounted suitable for SPMCB of 12 ways on iron / GI frame	4.00	Number	RA	4732.00	236.60	4968.60	19874.40			
17	Supplying & erecting G.I. pipe 'A' class 25 mm dia. erected for enclosing XLPE armoured cable on wall/pole as per specification no. CB-CE	20.00	Running Meter	7-6-1/138	196.00	9.80	205.80	4116.00			
18	Supplying & erecting G.I. pipe 'A' class 40 mm dia. erected for enclosing XLPE armoured cable on wall/pole as per specification no. CB-CE	12.00	Running Meter	7-6-2/138	304.00	15.20	319.20	3830.40			
19	Supplying and laying (including excavation of suitable width & depth up to 90 cm) 75 mm outside dia. double wall corrugated pipes (DWC) of HDPE for	24.00	Running Meter	7-6-10/139	227.00	11.35	238.35	5720.40			
20	Supplying & erecting 18 gauge M.S. Box powder coated (4"x4") 3 way for mains connection.	8.00	Number	MR	80.00	4.00	84.00	672.00			

21	Supplying & erecting Siemens type brass cable glands for 3 to 4 core 6 sq. mm. /2 to 4 core 10 sq. mm. for XLPE armoured cable as per specification No. CB-GL	6.00	Number	7-7-2/139	58.00	2.90	60.90	365.40
22	Supplying shockproof type hand lamp with lamp holder, bulb/ lamp 100 W guarded glass and 30 mtr. 3 core	6.00	Number	RA	1573.00	78.65	1651.65	9909.90
23	Point wiring for independent plug in 20 mm ISI marked HMS PVC conduit with 1.5 sq.mm (2+1E) FRLSH grade copper wire, flush type switch, earthing and	6.00	Number	1-9-8/17	496.00	24.80	520.80	3124.80
24	Supplying and erecting Street light bracket made from 25 mm. dia 'B' class G.I. Pipe, 0.6 m in length along with pole cap of 300 mm length and 80 mm	8.00	Number	RA	466.00	23.30	489.30	3914.40
25	Supplying & erecting mains with 2 x 2.5 Sq.mm stranded copper PVC insulated wire with 2 x 1.5 Sq.mm copper PVC wire in PVC casing - capping 20 mm on wall /	8.00	Running Meter	RA	131.00	6.55	137.55	1100.40
26	Supplying & erecting main with 2 x 4.00 Sq.mm stranded copper PVC insulated wire with 2 x 1.5 Sq.mm copper PVC wire in PVC casing - capping on wall / ceiling.	8.00	Running Meter	RA	154.00	7.70	161.70	1293.60
27	Supplying and erecting double pole switch surface type/ flush type 240V, 32A with indicator lamp & fuse as per specification no. SW-SWR/BDP.	10.00	Number	5-1-1/89	177.00	8.85	185.85	1858.50
28	Supplying and erecting double pole metal clad switch with HC type fuse and neutral link 240V, 32A on iron / GI frame as per specification no. SW-SWR/MDP ..	8.00	Number	5-1-3/89	783.00	39.15	822.15	6577.20
29	Supplying & erecting 3W, 230V integral type LED Lamp suitable for B-22/E-27 base.	8.00	Number	2-10-9/40	125.00	6.25	131.25	1050.00
30	Supplying and erecting T8 Fluorescent tube day light 1200mm 36 W	6.00	Number	2-10-2/40	44.00	2.20	46.20	277.20
31	Supplying & erecting ready to use Retrofit T8 LED 18 / 20 tube light with polycarbonate body, heat sink, integrated HF electronic driver complete &	8.00	Number	2-10-14/40	626.00	31.30	657.30	5258.40
32	Supplying and erecting regular/ standard model ceiling fan of 900 /1050 mm. sweep complete erected in position as per specification no. FG-FN/CF	10.00	Square Meter	2-12-2/41	1894.00	94.70	1988.70	19887.00
33	Supplying and fixing wiremesh (Jali) cover suitable for fitting / fan or for any purpose, complete with necessary materials. The jali cover shall be made from	8.00	Number	2-4-10/33	442.00	22.10	464.10	3712.80
34	Supplying and erecting ding dong / electronic musical type call bell with heavy duty coil suitable to operate on 230V A.C. supply erected on polished double wooden	6.00	Number	2-4-13/33	131.00	6.55	137.55	825.30
35	Supplying and erecting street light Wall bracket made from 25 mm. dia 'B' class G.I. pipe 1.2 m in total length complete as per specification no. FG-BKT/WB	6.00	Number	2-9-3/38	575.00	28.75	603.75	5022.50
36	Supplying & erecting CRCA sheet metal one way enclosures suitable for DP MCB /TP MCB /FP MCB erected on angle	1.00	Number	5-4-23/97	361.00	18.05	379.05	379.05
37	Supplying erecting and marking four pole isolators only switch version of miniature circuit breakers of 40A in provided distribution board complete.	1.00	Number	5-3-24/95	625.00	31.25	656.25	656.25
							<b>Total in Rs.</b>	<b>190802.85</b>

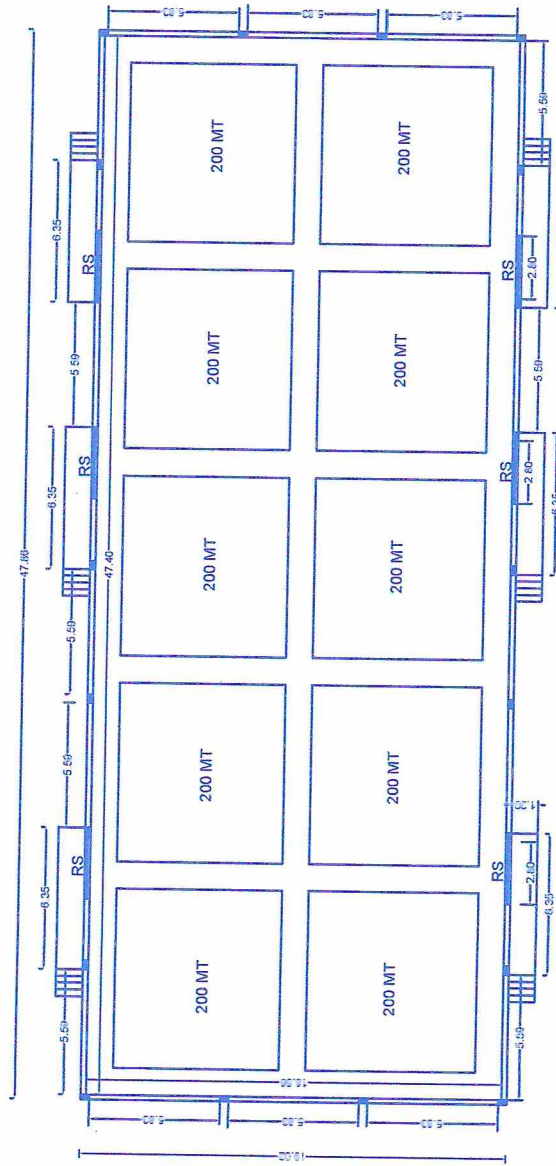
PROVIDING GI SHEET ROOFING



**ELEVATION (EAST FACING)**



**SECTION A - A'**



**PLAN FOR 2000 MT WAREHOUSE**  
SCALE 1:100



**BUILT UP AREA**  
SCALE 1:200

**AREA STATEMENT :-**

TOTAL PLOT AREA	2003.477 SQ.M
BUILT UP AREA	910.297 SQ.M
PLATFORM AREA	45.72 SQ.M

**SCHEDULE OF OPENING :-**

RS	Rolling Shutter	2.80 X 3.15
V	Ventilator (louvered)	1.20 X 0.60

**NAME OF WORK :-**  
CONSTRUCTION OF 1/2000 MT CAP. WH BLDG WITH ANCILLARY WORKS IN GAT NO.- 259, AT WATHAWADA, TQ. KALLAM, DIST.OSMANABAD.

**DATE :-** 20/08/2022 | **SCALE:-** 1:100, 1:200

**COMPANY :-**  
RAMBHAU AGRO FARMERS PRODUCER COMPANY LIMITED

**ARCHITECTS / ENGINEERS :-**

Er. Shivshankar S. Pangave  
(B.E. - CIVIL)  
(Reg. civil Engineer)  
T.P. LATUR/643/2019  
Shivam Consulting Engineers,  
In front of ramkrushna mangal kanyalaya , Kanheri Road, moti nagar, Latur. 413512  
Contact :- 8552085000

*S. S. Pangave*

**S. S. Pangave**  
(B.E. Civil)

Consulting Civil Engineer  
T.P. Latur / 643 / 2019

Mob. 8552085000